

UNDER DEVELOPMENT | FOR SALE



# 193 PINE ST

## 19,516 RENTABLE SF

18-UNIT MULTIFAMILY DEVELOPMENT  
MEDICAL DISTRICT LOCATION

MEMPHIS, TN 38104

**DEADLINE  
FOR OFFERS  
APRIL 25**



## DEVELOPMENT OPPORTUNITY

Cushman & Wakefield | Commercial Advisors is pleased to offer the opportunity to acquire the in-process multifamily development project at 193 Pine Street just off Union Avenue in Midtown Memphis. The three-story building is located in the Medical District and has been framed for 18 multifamily units. If interested in more detailed information, including a Phase I Environmental Report, Construction Drawings, Title work, and a copy of the Purchase & Sale Agreement, please request and execute a Non-Disclosure Agreement. Offers are due on or before April 25, 2023.

### Property Highlights

- Medical District Location
- One-block off Union Avenue
- One-bedroom units - Three (3)
- Two-bedroom units - Fifteen (15)
- The rentable SF: 19,516 SF
- Average unit size: 1,084 SF



**Luke Jensen, SIOR**  
Associate Vice President  
901 362 4313  
luke.jensen@commadv.com

**Matt Weathersby, SIOR, CCIM**  
Principal  
901 362 43173  
mweathersby@commadv.com

5101 Wheelis Drive  
Suite 300  
Memphis, TN 38117  
Main: 901 366 6070  
[www.commadv.com](http://www.commadv.com)

*Independently Owned and Operated / A Member of the Cushman & Wakefield Alliance*

Cushman & Wakefield Copyright 03/02/23. No warranty or representation, express or implied, is made to the accuracy or completeness of the information contained herein, and same is submitted subject to errors, omissions, change of price, rental or other conditions, withdrawal without notice, and to any special listing conditions imposed by the property owner(s). As applicable, we make no representation as to the condition of the property (or properties) in question.

# 193 PINE ST

## 19,516 RENTABLE SF

### 18-UNIT MULTIFAMILY DEVELOPMENT MEDICAL DISTRICT LOCATION

MEMPHIS, TN 38104

## PROPOSED SITE PLAN



There are three (3) one-bedroom units and fifteen (15) two-bedroom units. The rentable square footage is 19,516 SF with an average unit size of 1,084 SF

**Luke Jensen, SIOR**  
Associate Vice President  
901 362 4313  
luke.jensen@commadv.com

**Matt Weathersby, SIOR, CCIM**  
Principal  
901 362 43173  
mweathersby@commadv.com

5101 Wheelis Drive  
Suite 300  
Memphis, TN 38117  
Main: 901 366 6070  
[www.commadv.com](http://www.commadv.com)

*Independently Owned and Operated / A Member of the Cushman & Wakefield Alliance*

Cushman & Wakefield Copyright 03/02/23. No warranty or representation, express or implied, is made to the accuracy or completeness of the information contained herein, and same is submitted subject to errors, omissions, change of price, rental or other conditions, withdrawal without notice, and to any special listing conditions imposed by the property owner(s). As applicable, we make no representation as to the condition of the property (or properties) in question.

# 193 PINE ST

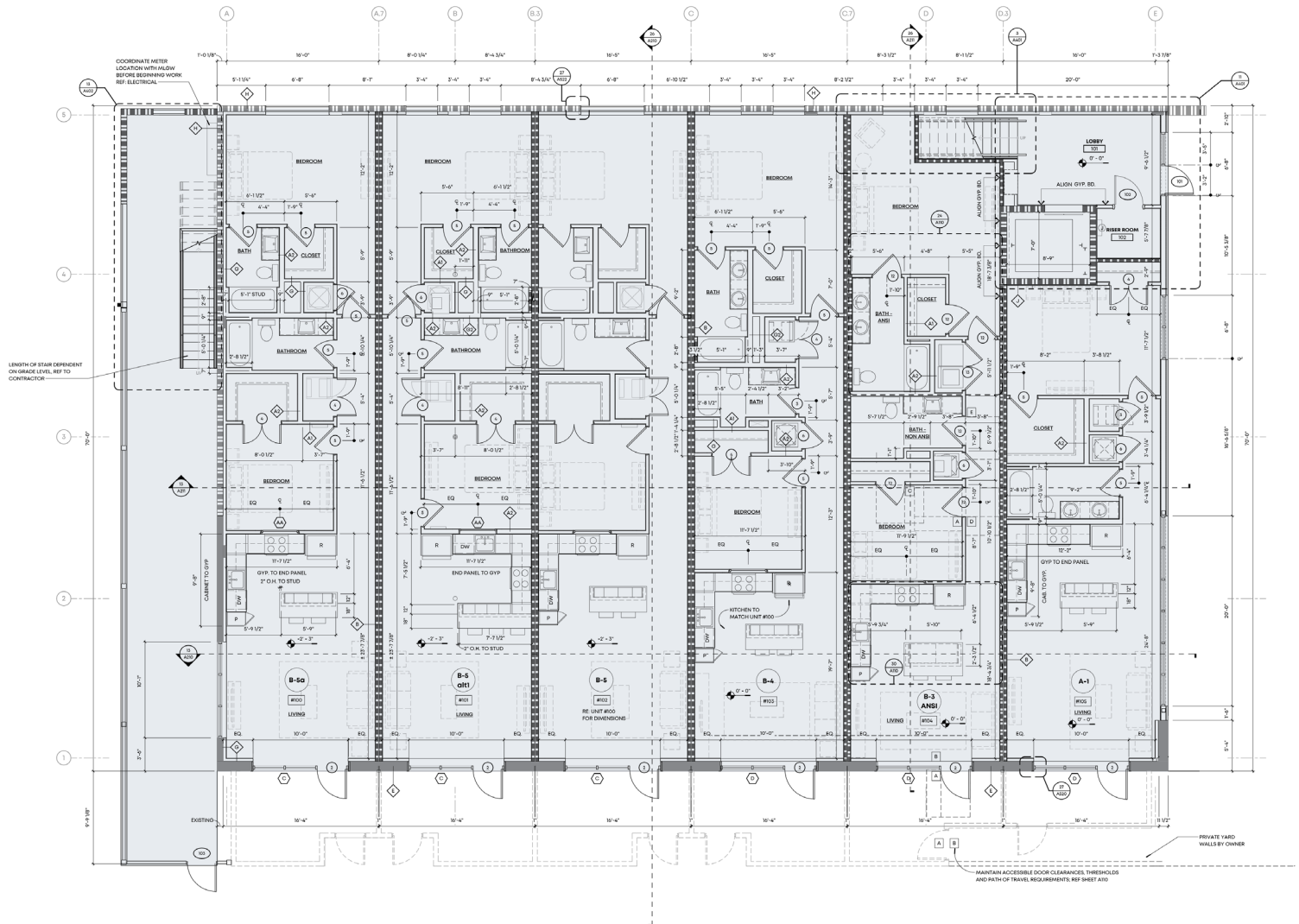
## 19,516 RENTABLE SF

### 18-UNIT MULTIFAMILY DEVELOPMENT MEDICAL DISTRICT LOCATION

MEMPHIS, TN 38104

## PROPOSED FLOOR PLAN

## 1ST FLOOR



**Luke Jensen, SIOR**  
Associate Vice President  
901 362 4313  
luke.jensen@commadv.com

**Matt Weathersby, SIOR, CCIM**  
Principal  
901 362 43173  
mweathersby@commadv.com

5101 Wheelis Drive  
Suite 300  
Memphis, TN 38117  
Main: 901 366 6070  
[www.commadv.com](http://www.commadv.com)

*Independently Owned and Operated / A Member of the Cushman & Wakefield Alliance*

Cushman & Wakefield Copyright 03/02/23. No warranty or representation, express or implied, is made to the accuracy or completeness of the information contained herein, and same is submitted subject to errors, omissions, change of price, rental or other conditions, withdrawal without notice, and to any special listing conditions imposed by the property owner(s). As applicable, we make no representation as to the condition of the property (or properties) in question.

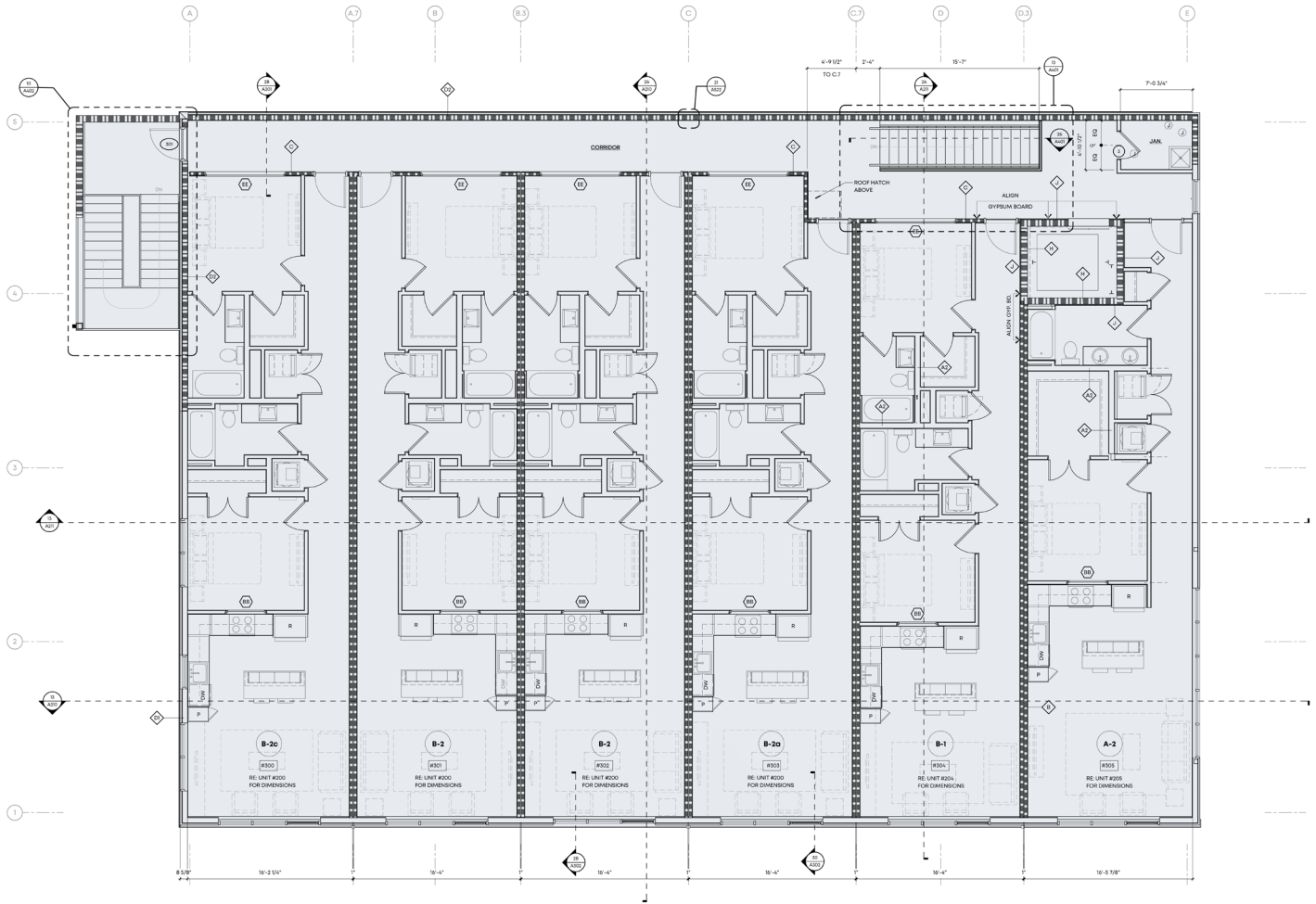
# 193 PINE ST

## 19,516 RENTABLE SF

### 18-UNIT MULTIFAMILY DEVELOPMENT MEDICAL DISTRICT LOCATION

MEMPHIS, TN 38104

## PROPOSED FLOOR PLAN 2ND FLOOR



**Luke Jensen, SIOR**  
Associate Vice President  
901 362 4313  
luke.jensen@commadv.com

**Matt Weathersby, SIOR, CCIM**  
Principal  
901 362 43173  
mweathersby@commadv.com

5101 Wheelis Drive  
Suite 300  
Memphis, TN 38117  
Main: 901 366 6070  
[www.commadv.com](http://www.commadv.com)

*Independently Owned and Operated / A Member of the Cushman & Wakefield Alliance*

Cushman & Wakefield Copyright 03/02/23. No warranty or representation, express or implied, is made to the accuracy or completeness of the information contained herein, and same is submitted subject to errors, omissions, change of price, rental or other conditions, withdrawal without notice, and to any special listing conditions imposed by the property owner(s). As applicable, we make no representation as to the condition of the property (or properties) in question.

# 193 PINE ST

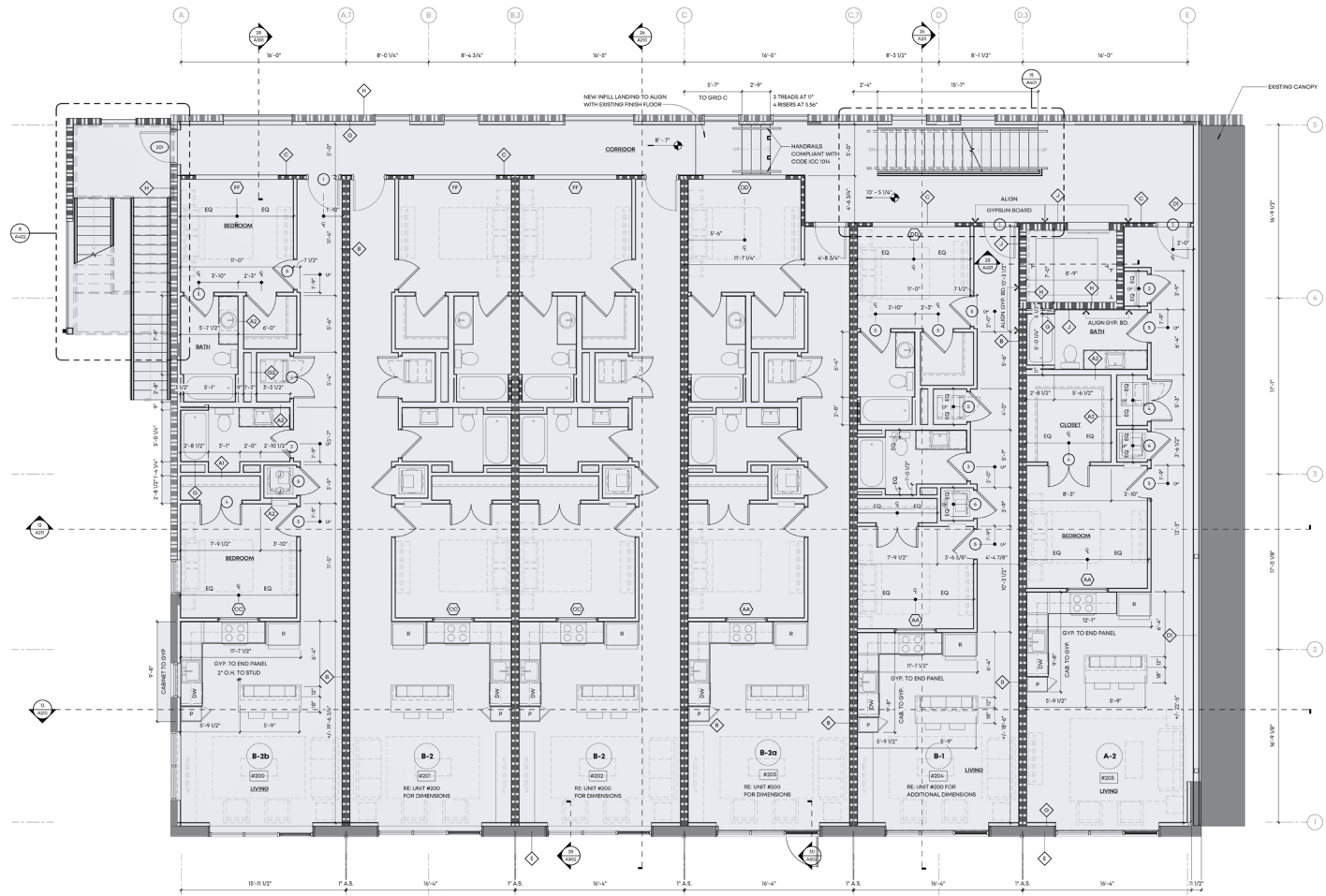
## 19,516 RENTABLE SF

### 18-UNIT MULTIFAMILY DEVELOPMENT MEDICAL DISTRICT LOCATION

MEMPHIS, TN 38104

## PROPOSED FLOOR PLAN

## 3RD FLOOR



**Luke Jensen, SIOR**  
 Associate Vice President  
 901 362 4313  
 luke.jensen@commadv.com

**Matt Weathersby, SIOR, CCIM**  
 Principal  
 901 362 43173  
 mweathersby@commadv.com

5101 Wheelis Drive  
 Suite 300  
 Memphis, TN 38117  
 Main: 901 366 6070  
 www.commadv.com

*Independently Owned and Operated / A Member of the Cushman & Wakefield Alliance*

Cushman & Wakefield Copyright 03/02/23. No warranty or representation, express or implied, is made to the accuracy or completeness of the information contained herein, and same is submitted subject to errors, omissions, change of price, rental or other conditions, withdrawal without notice, and to any special listing conditions imposed by the property owner(s). As applicable, we make no representation as to the condition of the property (or properties) in question.