



CUSHMAN &  
WAKEFIELD



COMMERCIAL  
ADVISORS

AVAILABLE FOR LEASE

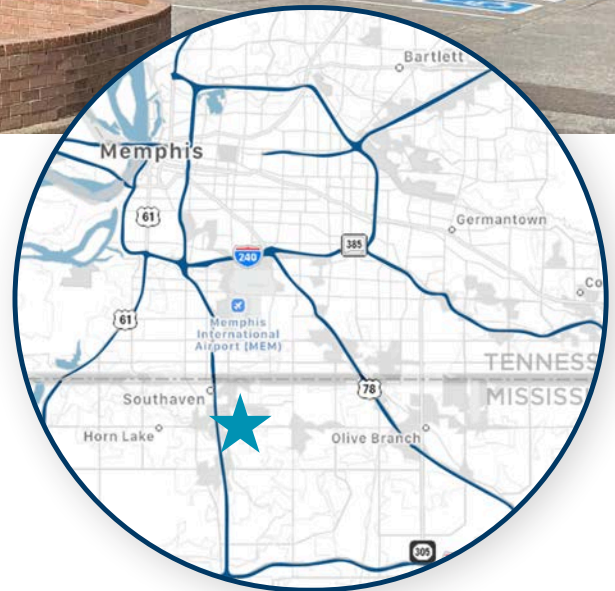
**7075 MALCO BLVD**  
SOUTHAVEN, MS 38671



## RETAIL SPACE AVAILABLE FOR LEASE

### Property Highlights

- Available Space:  
101 – Available – 2,536 SF
- Year Built: 2006
- Parking: 94 spaces; 4.89:1,000
- Traffic Counts: approximately 21,000 vehicles per day along Airways Blvd and 41,000 vehicles per day along E Goodman Rd



**Carson Claybrook**  
Senior Vice President  
901 481 4214  
[cclaybrook@commadv.com](mailto:cclaybrook@commadv.com)

5101 Wheelis Drive, Suite 300  
Memphis, TN 38117  
Main: 901 366 6070  
[www.commadv.com](http://www.commadv.com)

*Independently Owned and Operated / A Member of the Cushman & Wakefield Alliance*

Cushman & Wakefield Copyright 2020. No warranty or representation, express or implied, is made to the accuracy or completeness of the information contained herein, and same is submitted subject to errors, omissions, change of price, rental or other conditions, withdrawal without notice, and to any special listing conditions imposed by the property owner(s). As applicable, we make no representation as to the condition of the property (or properties) in question. 030520





CUSHMAN &  
WAKEFIELD



COMMERCIAL  
ADVISORS

AVAILABLE FOR LEASE

7075 MALCO BLVD  
SOUTHAVEN, MS 38671

## AMENITIES MAP



**Carson Claybrook**  
Senior Vice President  
901 481 4214  
cclaybrook@commadv.com

5101 Wheelis Drive, Suite 300  
Memphis, TN 38117  
Main: 901 366 6070  
[www.commadv.com](http://www.commadv.com)

*Independently Owned and Operated / A Member of the Cushman & Wakefield Alliance*

Cushman & Wakefield Copyright 2020. No warranty or representation, express or implied, is made to the accuracy or completeness of the information contained herein, and same is submitted subject to errors, omissions, change of price, rental or other conditions, withdrawal without notice, and to any special listing conditions imposed by the property owner(s). As applicable, we make no representation as to the condition of the property (or properties) in question. 030520



**CUSHMAN &  
WAKEFIELD**



**COMMERCIAL  
ADVISORS**

AVAILABLE FOR LEASE

**7075 MALCO BLVD**  
SOUTHAVEN, MS 38671

## CURRENT AVAILABILITIES

101	102	103	105	106	109-110	111	112
2,536 SF AVAILABLE	Results Physiotherapy	Wingstop	Mediterranean Restaurant	Once Upon a Child	Envy Nails	Bombay Salon	Baskin Robbins

## PROPERTY KEY

105	Available - 2,536 SF
102	Results Physiotherapy
103	Wingstop
104	Mediterranean Restaurant

106	Once Upon a Child
109	Envy Nails
111	Bombay Salon
112	Baskin Robbins

**Carson Claybrook**  
Senior Vice President  
901 481 4214  
cclaybrook@commadv.com

5101 Wheelis Drive, Suite 300  
Memphis, TN 38117  
Main: 901 366 6070  
[www.commadv.com](http://www.commadv.com)

*Independently Owned and Operated / A Member of the Cushman & Wakefield Alliance*

Cushman & Wakefield Copyright 2020. No warranty or representation, express or implied, is made to the accuracy or completeness of the information contained herein, and same is submitted subject to errors, omissions, change of price, rental or other conditions, withdrawal without notice, and to any special listing conditions imposed by the property owner(s). As applicable, we make no representation as to the condition of the property (or properties) in question. 030520





**CUSHMAN &  
WAKEFIELD**

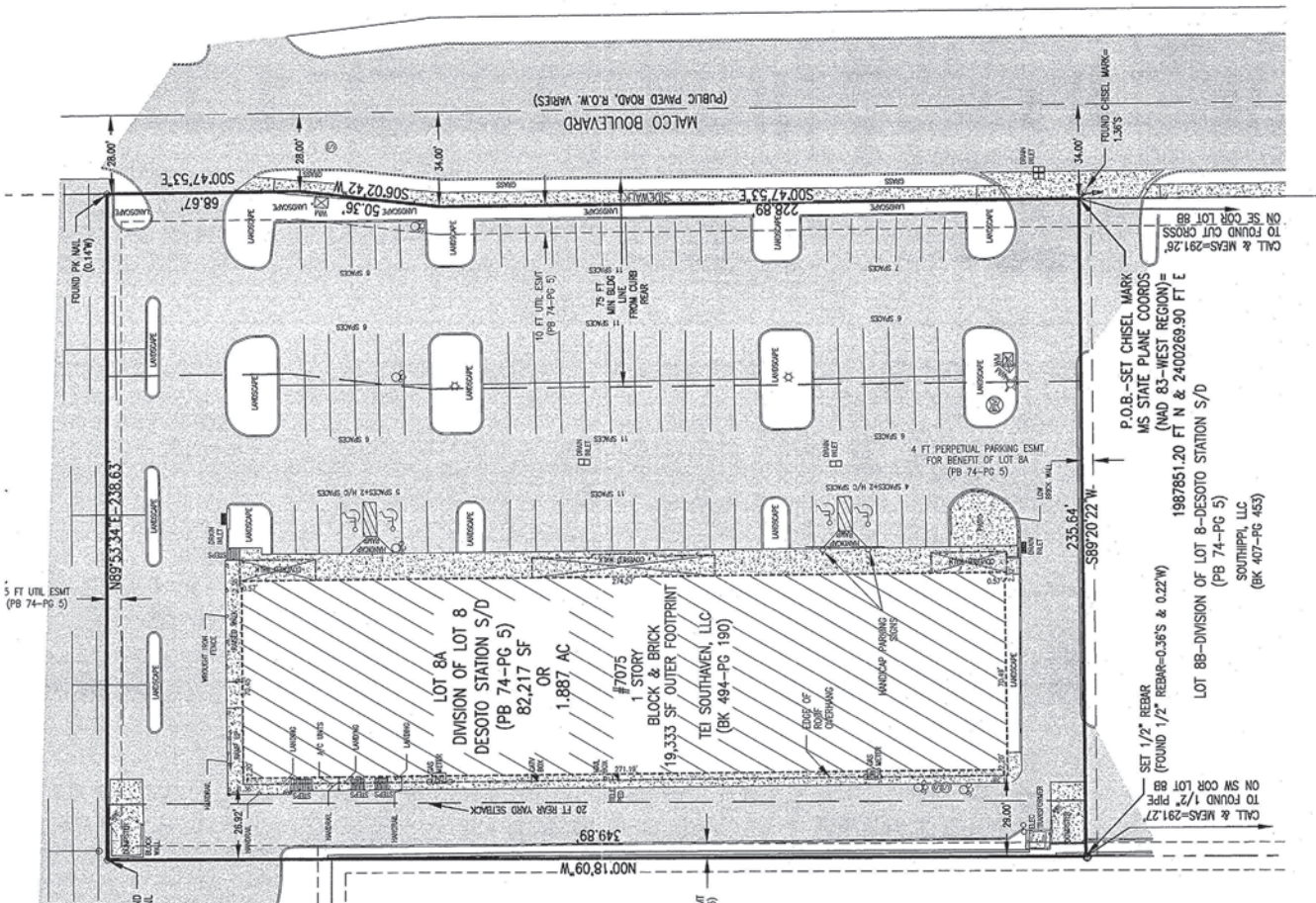


**COMMERCIAL  
ADVISORS**

AVAILABLE FOR LEASE

**7075 MALCO BLVD**  
SOUTHAVEN, MS 38671

## SITE PLAN



**Carson Claybrook**  
Senior Vice President  
901 481 4214  
cclaybrook@commadv.com

5101 Wheelis Drive, Suite 300  
Memphis, TN 38117  
Main: 901 366 6070  
[www.commadv.com](http://www.commadv.com)

*Independently Owned and Operated / A Member of the Cushman & Wakefield Alliance*

Cushman & Wakefield Copyright 2020. No warranty or representation, express or implied, is made to the accuracy or completeness of the information contained herein, and same is submitted subject to errors, omissions, change of price, rental or other conditions, withdrawal without notice, and to any special listing conditions imposed by the property owner(s). As applicable, we make no representation as to the condition of the property (or properties) in question. 030520