



CUSHMAN &
WAKEFIELD



COMMERCIAL
ADVISORS

FOR LEASE

CROSTOWN SHOPPES

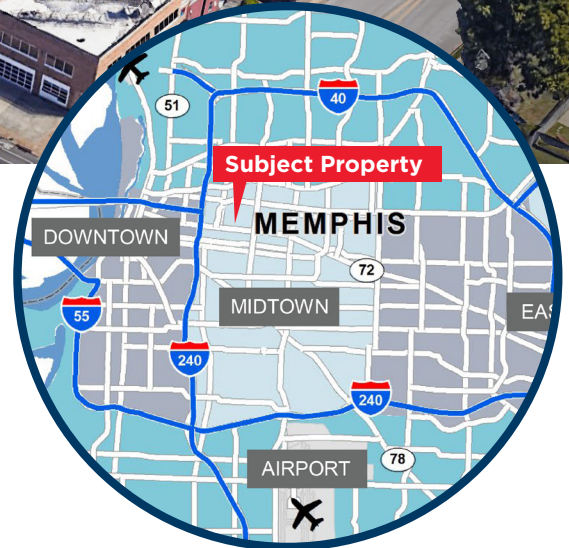
N Cleveland | Memphis, TN 38104



Retail Space Available For Lease

Property Highlights

- Excellent Crosstown retail opportunity
- 15' ceilings



Demographics

	1 Mile	3 Mile	5 Mile
Population	16,406	96,531	206,053
Average Household Income	\$76,028	\$75,520	\$69,355
Median Household Income	\$48,135	\$42,712	\$39,458
Median Age	39.6	37.2	36.6
# of Businesses	736	5,071	7,825
# of Employees	17,670	97,389	130,835

Carson Claybrook
Senior Vice President
901 252 6483
cclaybrook@commadv.com

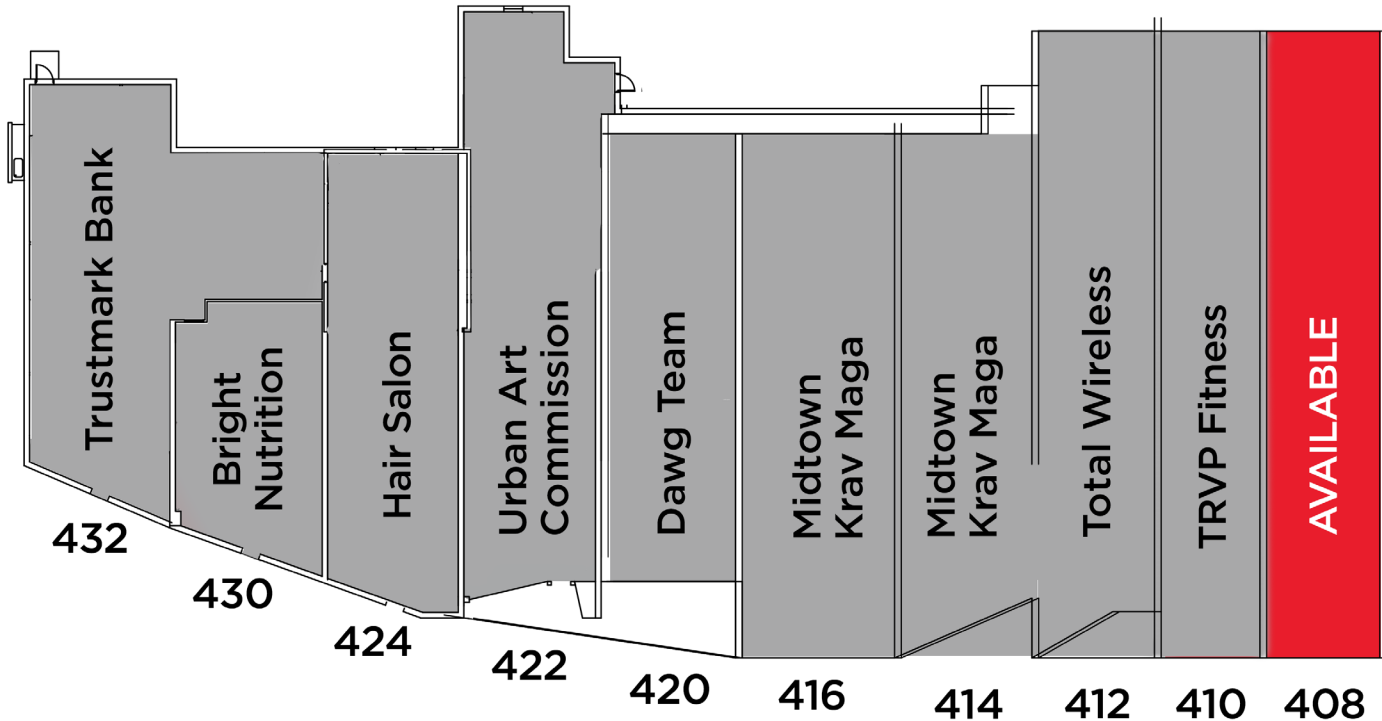
5101 Wheelis Drive, Suite 300
Memphis, TN 38117
Main: 901 366 6070
www.commadv.com

Independently Owned and Operated / A Member of the Cushman & Wakefield Alliance

Cushman & Wakefield Copyright 04/25/25. No warranty or representation, express or implied, is made to the accuracy or completeness of the information contained herein, and same is submitted subject to errors, omissions, change of price, rental or other conditions, withdrawal without notice, and to any special listing conditions imposed by the property owner(s). As applicable, we make no representation as to the condition of the property (or properties) in question.



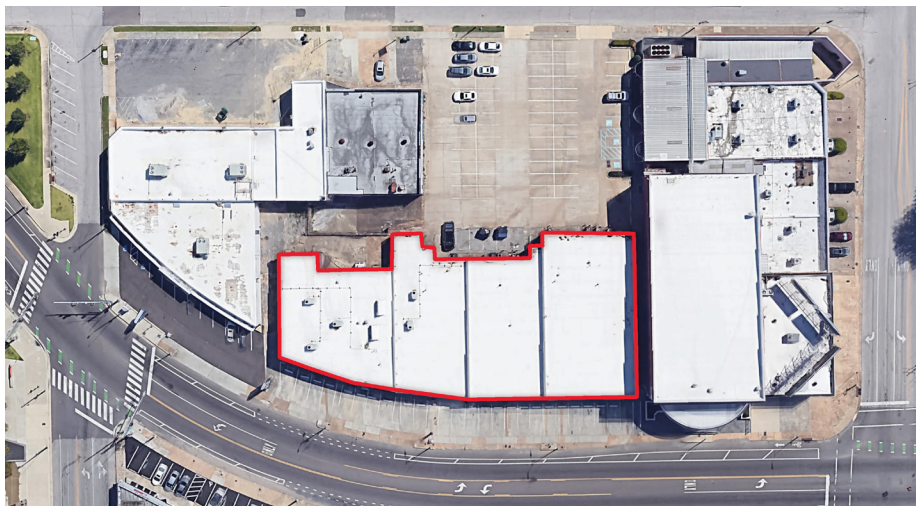
SITE PLAN MAP



AERIAL

AVAILABLE SPACE

SUITE #	SF
408	2,700



AMENITIES MAP



Carson Claybrook
Senior Vice President
901 252 6483
cclaybrook@commadv.com

5101 Wheelis Drive, Suite 300
Memphis, TN 38117
Main: 901 366 6070
www.commadv.com

Independently Owned and Operated / A Member of the Cushman & Wakefield Alliance

Cushman & Wakefield Copyright 04/25/25. No warranty or representation, express or implied, is made to the accuracy or completeness of the information contained herein, and same is submitted subject to errors, omissions, change of price, rental or other conditions, withdrawal without notice, and to any special listing conditions imposed by the property owner(s). As applicable, we make no representation as to the condition of the property (or properties) in question.