



MT CARMEL

LOGISTICS CENTER

Byhalia, MS 38611

701,100 SF

Build-to-Suit
Opportunity

±40 acre site



LOGISTICS SPACE FOR LEASE

701,100 SF cross-dock facility

BASE BUILDING HIGHLIGHTS

- ±40 acre site
- Cross-dock configuration with up to 150 dock doors
- 4 drive-in ramp doors
- 168 trailer parking
- 288 vehicle parking spaces
- Office is build-to-suit to tenant specifications
- Column spacing of 52' x 50' with 52' x 60' Speed Bays
- 40' clear height
- ESFR sprinkler system
- Up to 7,000-amp 480 volt, three-phase



Caleb Park, SIOR
Vice President
(901) 362-3454
cpark@commadv.com

Jeb Fields, SIOR, Dual Designation
Vice Chairman
(901) 362-4315
jfields@commadv.com

5101 Wheelis Drive, Suite 300
Memphis, TN 38117
Main: 901 366 6070
www.commadv.com

Independently Owned and Operated / A Member of the Cushman & Wakefield Alliance

Cushman & Wakefield Copyright 2020. No warranty or representation, express or implied, is made to the accuracy or completeness of the information contained herein, and same is submitted subject to errors, omissions, change of price, rental or other conditions, withdrawal without notice, and to any special listing conditions imposed by the property owner(s). As applicable, we make no representation as to the condition of the property (or properties) in question.



CUSHMAN &
WAKEFIELD



COMMERCIAL
ADVISORS



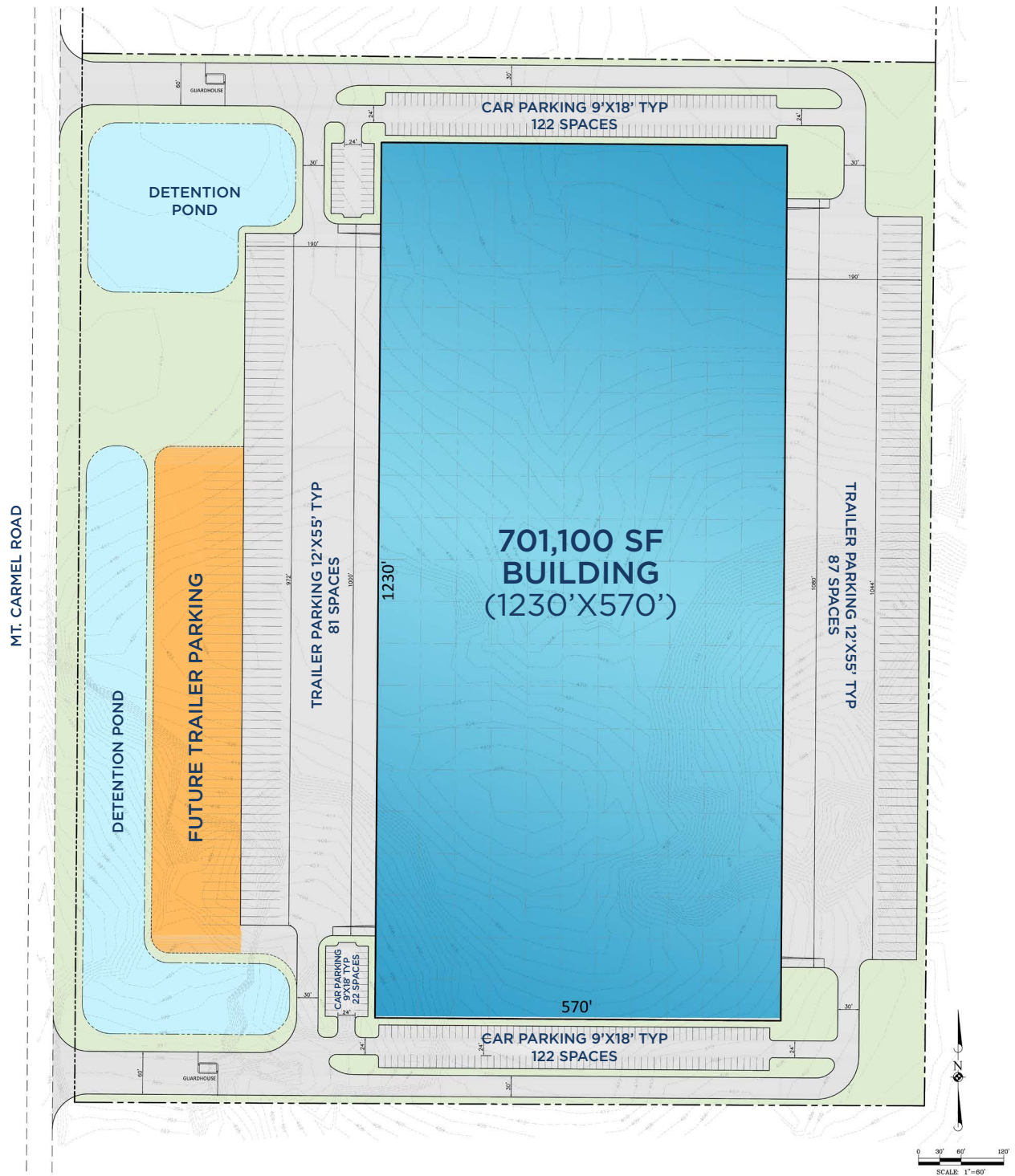
LOGISTICS BUILDING FOR LEASE

MT CARMEL

LOGISTICS CENTER

Byhalia, MS 38611

PROPOSED SITE PLAN



Independently Owned and Operated / A Member of the Cushman & Wakefield Alliance

Cushman & Wakefield Copyright 04/29/25. No warranty or representation, express or implied, is made to the accuracy or completeness of the information contained herein, and same is submitted subject to errors, omissions, change of price, rental or other conditions, withdrawal without notice, and to any special listing conditions imposed by the property owner(s). As applicable, we make no representation as to the condition of the property (or properties) in question.



**CUSHMAN &
WAKEFIELD**



**COMMERCIAL
ADVISORS**



LOGISTICS BUILDING FOR LEASE

MT CARMEL

LOGISTICS CENTER

Byhalia, MS 38611

BASE BUILDING DETAILS

Warehouse Square Footage	+/- 701,100 SF
Office	Two Store-front locations; Office to be BTS Per Tenant(s) Requirement
Clear Height	40' clear from floor to lowest obstruction at first column line in from the dock doors
Overhead Doors	Up to 150 dock doors, 1 recycling & 4 trash (9' x 10') and four (4) 12' x 14' drive in doors
Trailer Parking	168 trailer parking stalls (12' width) for perpendicular stalls to fit 53' trailers
Car Parking	288 (See plan for locations)
Warehouse Floor Specs	8" unreinforced concrete; FL50/FF35
Column Spacing	52' X 50' typical; 52' X 60' speed bays
Interior Warehouse Painting	Interior walls painted white. Interior columns painted OSHA yellow from finish floor to 10' above finish floor and white from 10' above finish floor to underside of bar joist. Columns with Fire extinguishers painted with a 4' red band at the top. Fire Suppression Risers painted red from floor finish level to underside of bar joist
Sprinkler System Type	NFPA compliant ESFR sprinkler system
Electric Service	2 Services Proposed: Service # 1; up to 4,000 Amp 480V 3 phase. Service #2 ; Up to 3,000 Amp 480V 3 phase
Exterior Lighting	LED 100% cut-off style fixtures. Minimum of 1.0 foot-candle average throughout exterior pavement areas

BUILD-TO-SUIT OPTIONS

(Final Build-Out Spec Per Tenant Requirement)

LIGHTING	
Office Lighting	40 FC at 36" AFF
Bathroom Lighting	35 FC at 36" AFF
Warehouse Lighting	Motion sensor controlled LED light fixtures to provide minimum 25/30 FC of maintained illumination at 36" AFF (Based upon a layout for 40% rack, 60% bulk 30 FC/25 FC) Fixtures equipped with 10-foot pigtails to allow for minor fixture relocation
CLIMATE CONTROL/VENTILATION	
Office	Build-To-Suit Per Tenant Spec; Separate systems and controls for IT room, shipping office and main office
Warehouse	Ambient Warehouse - Storage/warehouse area winter heating to 50F. HVLS fans at dock areas, 300' o.c. and @ pick areas, total of (21) 24' diameter HVLS fans
DOCK EQUIPMENT	
Dock Levelers	Serco 7' x 8', 40,000 pound capacity, pit style Hydraulic dock levelers with 20" lip, Nylon brush pit seals, Full range toe guards
Dock Seals/Shelters/ Locks/Lights	Kelley FSR-1000 Dock Shelters with TS-55 fabric, Sharc head curtain, wear pleats, fire retardant foam, Serco Pit Bull automatic truck restraints; swing arm dock light, zee guard door track protection and steel faced bumpers

Independently Owned and Operated / A Member of the Cushman & Wakefield Alliance

Cushman & Wakefield Copyright 04/29/25. No warranty or representation, express or implied, is made to the accuracy or completeness of the information contained herein, and same is submitted subject to errors, omissions, change of price, rental or other conditions, withdrawal without notice, and to any special listing conditions imposed by the property owner(s). As applicable, we make no representation as to the condition of the property (or properties) in question.



CUSHMAN &
WAKEFIELD



COMMERCIAL
ADVISORS



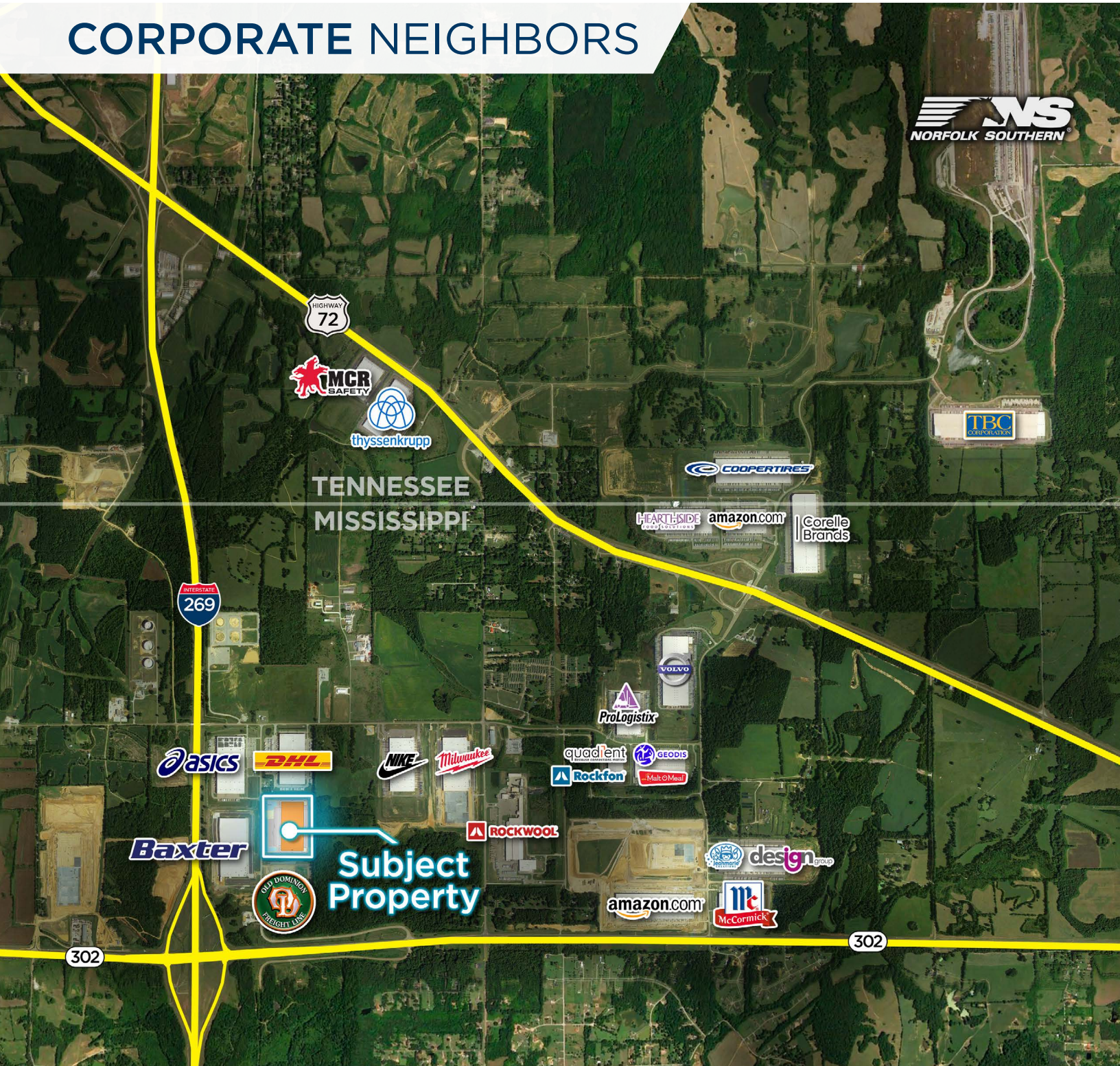
LOGISTICS BUILDING FOR LEASE

MT CARMEL

LOGISTICS CENTER

Byhalia, MS 38611

CORPORATE NEIGHBORS



Independently Owned and Operated / A Member of the Cushman & Wakefield Alliance

Cushman & Wakefield Copyright 04/29/25. No warranty or representation, express or implied, is made to the accuracy or completeness of the information contained herein, and same is submitted subject to errors, omissions, change of price, rental or other conditions, withdrawal without notice, and to any special listing conditions imposed by the property owner(s). As applicable, we make no representation as to the condition of the property (or properties) in question.



CUSHMAN & WAKEFIELD



COMMERCIAL ADVISORS



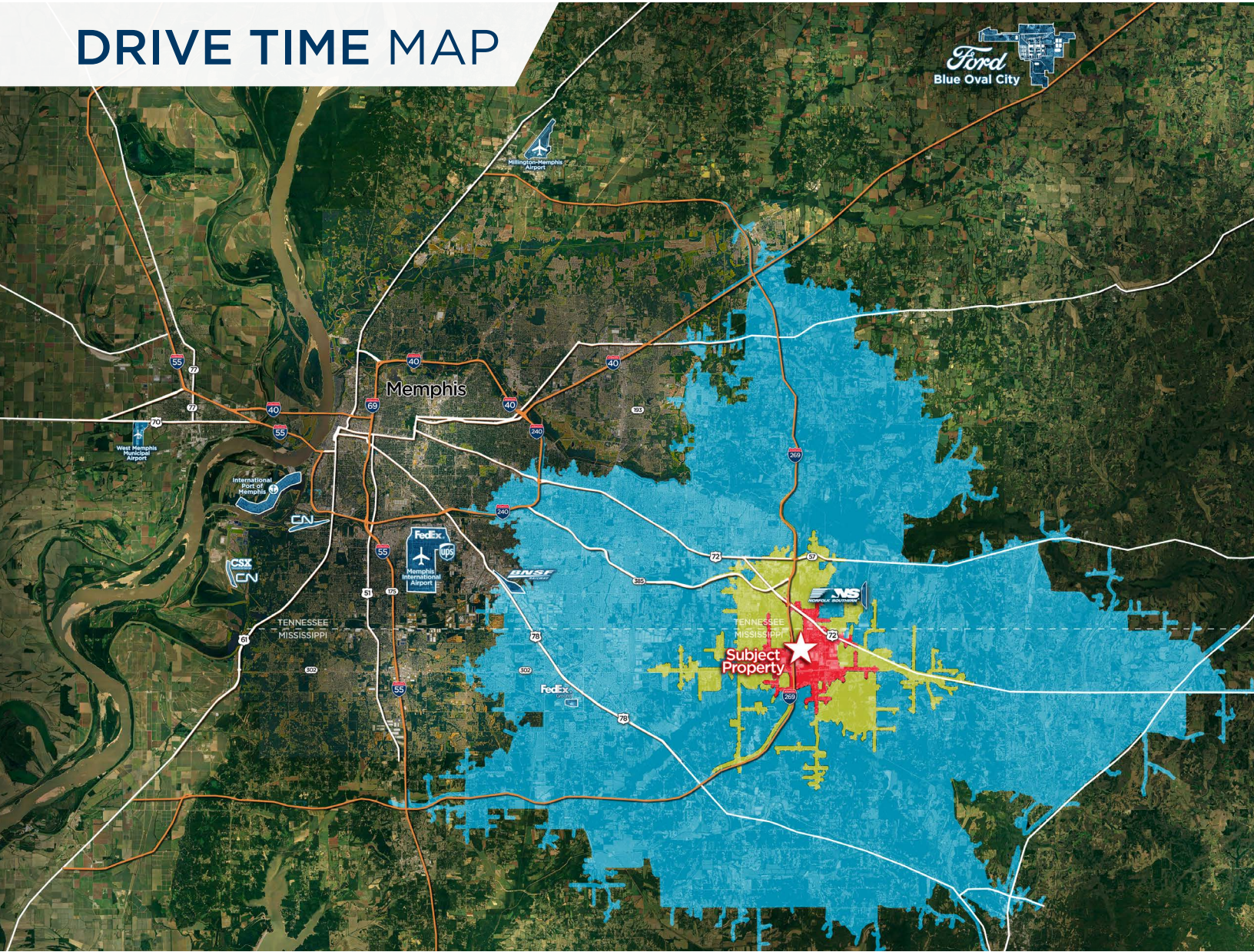
LOGISTICS BUILDING FOR LEASE

MT CARMEL

LOGISTICS CENTER

Byhalia, MS 38611

DRIVE TIME MAP



- 5 MINS
- 10 MINS
- 25 MINS



19 MINS 19 MILES	27 MINS 25 MILES	35 MINS 32 MILES	12 MINS 7 MILES	31 MINS 28 MILES	36 MINS 21 MILES	40 MINS 42 MILES
---------------------------	---------------------------	---------------------------	--------------------------	---------------------------	---------------------------	---------------------------

Independently Owned and Operated / A Member of the Cushman & Wakefield Alliance

Cushman & Wakefield Copyright 04/29/25. No warranty or representation, express or implied, is made to the accuracy or completeness of the information contained herein, and same is submitted subject to errors, omissions, change of price, rental or other conditions, withdrawal without notice, and to any special listing conditions imposed by the property owner(s). As applicable, we make no representation as to the condition of the property (or properties) in question.



CUSHMAN & WAKEFIELD



COMMERCIAL ADVISORS



LOGISTICS BUILDING FOR LEASE

MT CARMEL

LOGISTICS CENTER

Byhalia, MS 38611

PRIME LOCATION

NATIONAL DRIVE TIME

1-DAY DRIVE

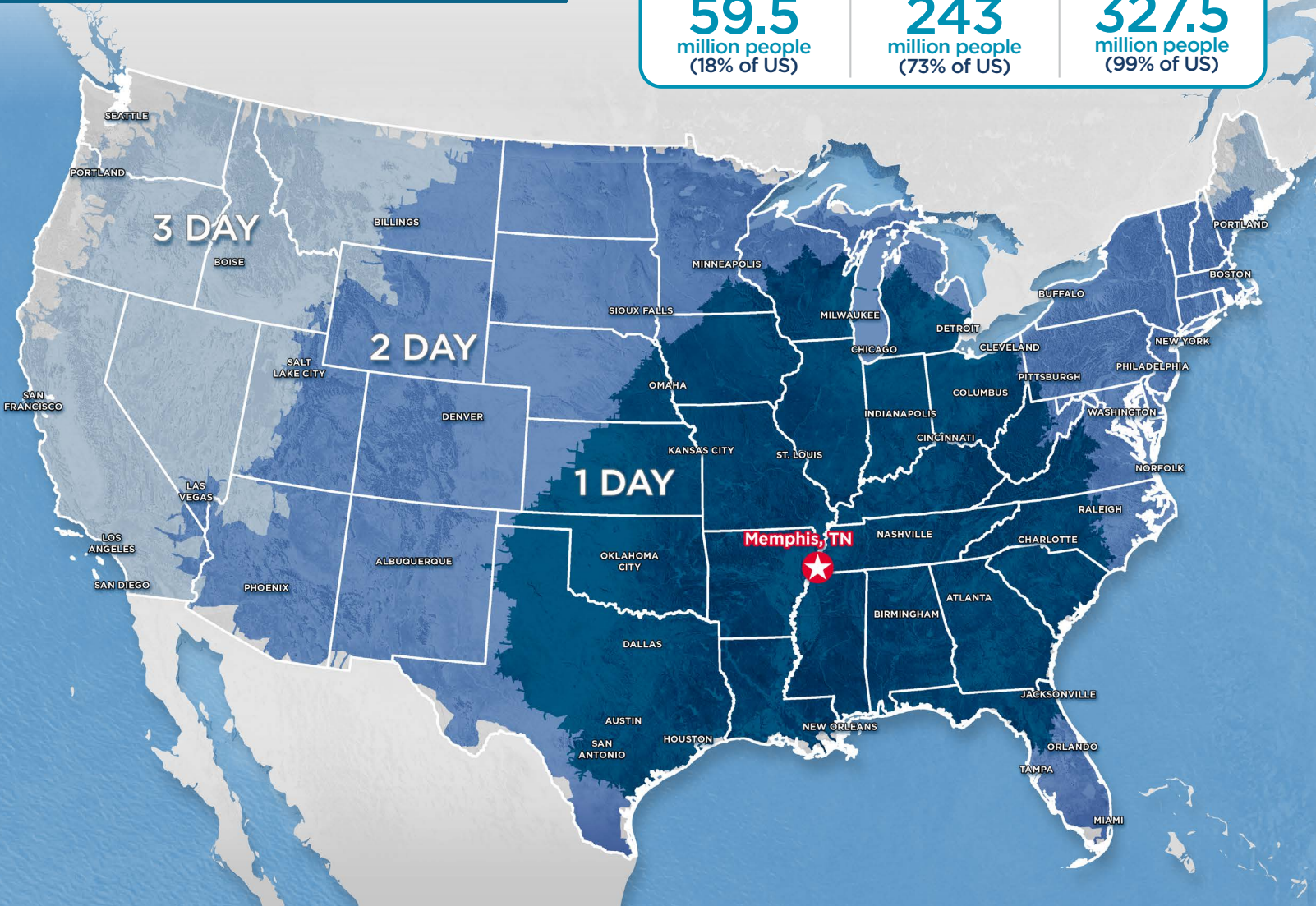
59.5
million people
(18% of US)

2-DAY DRIVE

243
million people
(73% of US)

3-DAY DRIVE

327.5
million people
(99% of US)



MEMPHIS, TN AMERICA'S DISTRIBUTION CENTER



2nd

Largest
Cargo
Airport in
the World



3rd

Busiest
Trucking
Corridor



5

Class 1
Railroads



3rd

Largest
Inland
Port in
the US

Caleb Park, SOIR

Vice President
(901) 362-3454
cpark@commadv.com

Jeb Fields, SIOR, Dual Designation

Vice Chairman
(901) 362-4315
jfields@commadv.com

5101 Wheelis Drive, Suite 300

Memphis, TN 38117

Main: 901 366 6070

www.commadv.com

Independently Owned and Operated / A Member of the Cushman & Wakefield Alliance

Cushman & Wakefield Copyright 2020. No warranty or representation, express or implied, is made to the accuracy or completeness of the information contained herein, and same is submitted subject to errors, omissions, change of price, rental or other conditions, withdrawal without notice, and to any special listing conditions imposed by the property owner(s). As applicable, we make no representation as to the condition of the property (or properties) in question.