

LAND FOR SALE

Columbus, MS

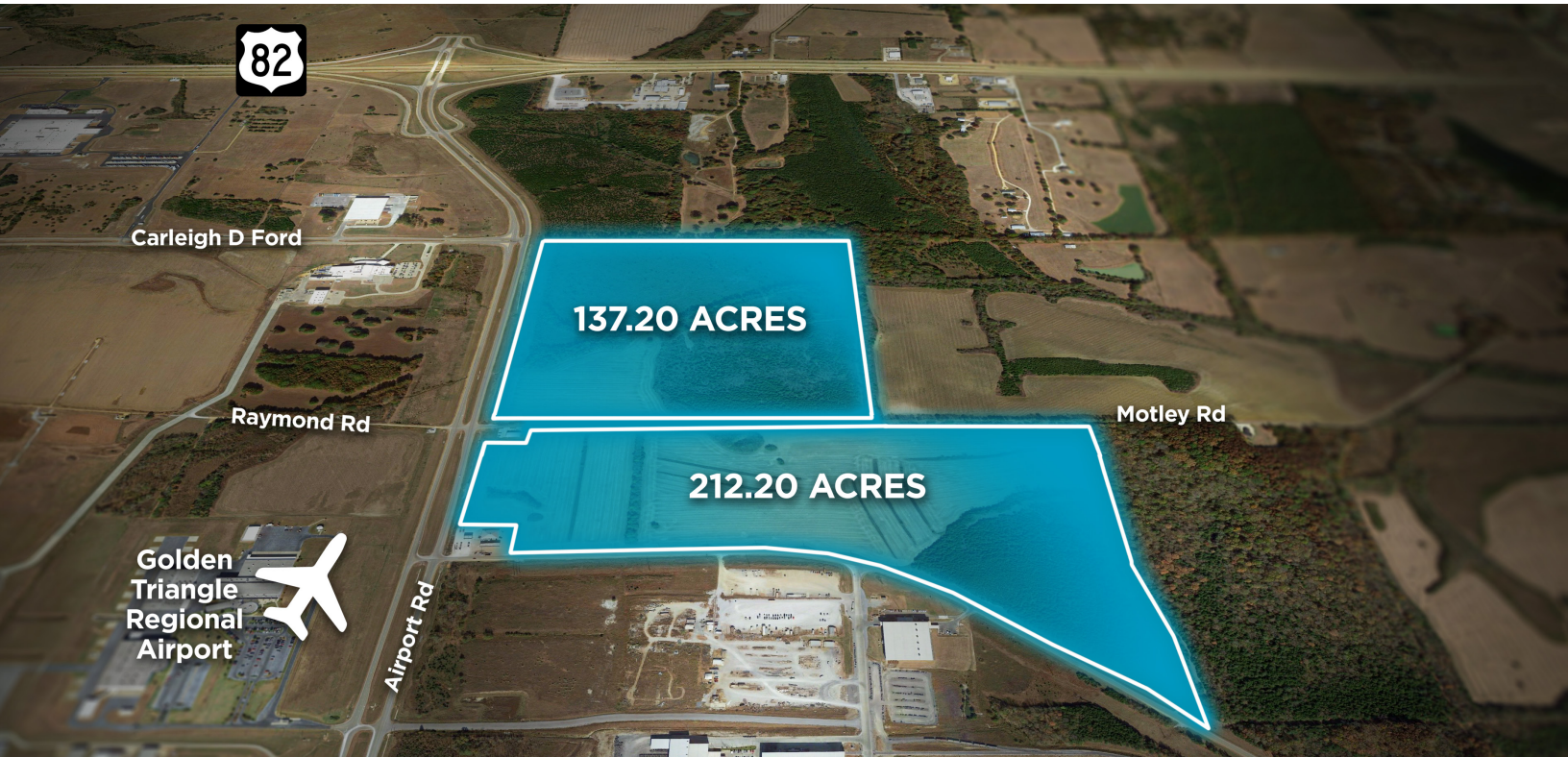
CUSHMAN & WAKEFIELD

COMMERCIAL ADVISORS

EGS

350+/- Acres

INDUSTRIAL SUBMARKET



Property Highlights

- +/-350 acres available
- Close proximity/direct access to highway
- Located near Columbus-Lowndes County Airport
- Opportunity to build distribution facility/warehouse up to 2 msf
- Strong water supply with 16" line
- Transmission & distribution
- Located in the Golden Triangle region, offering prime development potential
 - Multi-modal destination with water, rail, road and air
 - Most robust and redundant power in North MS (through TVA)



Property Area 350+/- Acres

Asking Price \$32,500 per acre for the full parcel

Subdivision pricing TBD on a case by case basis

Jeb Fields, SIOR, Dual Designation
Executive Vice President/Principal
+1 901 362 4315
jfields@commadv.com

Deborah McGill Smith, SIOR
EGS Commercial
+1 205 314 5534
dsmith@egsinc.com

CUSHMAN & WAKEFIELD

COMMERCIAL ADVISORS

EGS

Independently Owned and Operated / A Member of the Cushman & Wakefield Alliance

Cushman & Wakefield Copyright 01/09/23. No warranty or representation, express or implied, is made to the accuracy or completeness of the information contained herein, and same is submitted subject to errors, omissions, change of price, rental or other conditions, withdrawal without notice, and to any special listing conditions imposed by the property owner(s). As applicable, we make no representation as to the condition of the property (or properties) in question.

LAND FOR SALE

Columbus, MS



CUSHMAN &
WAKEFIELD

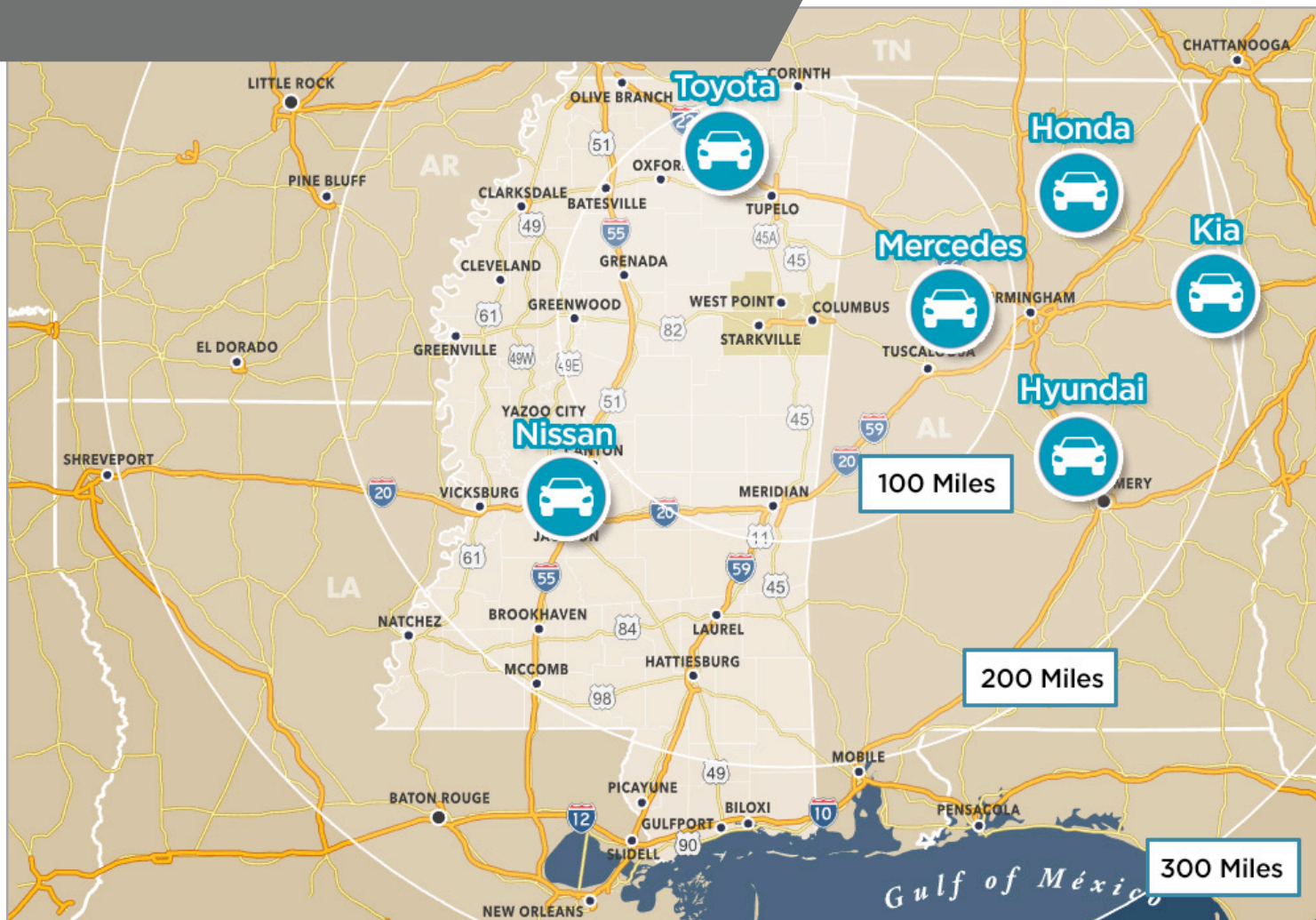


COMMERCIAL
ADVISORS

EGS

350+/- Acres

INDUSTRIAL SUBMARKET



Region Highlights

- Located in the Golden Triangle Industrial area - the “triangle” is formed by the cities of Columbus, Starkville, and West Point
- Centrally located for access to the automotive corridor
- The three counties are home to a population of over 128,000 and 500,000 workers are within 60 miles of the region
- Focus regionally on workforce training programs through training centers and local universities
- Successful economic development region - GTR has attracted \$5.9 billion in capital investment since 2008

Jeb Fields, SIOR, Dual Designation

Executive Vice President/Principal
+ 1 901 362 4315
jfields@commadv.com

Deborah McGill Smith, SIOR

EGS Commercial
+ 1 205 314 5534
dsmith@egsinc.com



CUSHMAN &
WAKEFIELD



COMMERCIAL
ADVISORS



EGS

Independently Owned and Operated / A Member of the Cushman & Wakefield Alliance

Cushman & Wakefield Copyright 01/09/23. No warranty or representation, express or implied, is made to the accuracy or completeness of the information contained herein, and same is submitted subject to errors, omissions, change of price, rental or other conditions, withdrawal without notice, and to any special listing conditions imposed by the property owner(s). As applicable, we make no representation as to the condition of the property (or properties) in question.

LAND FOR SALE

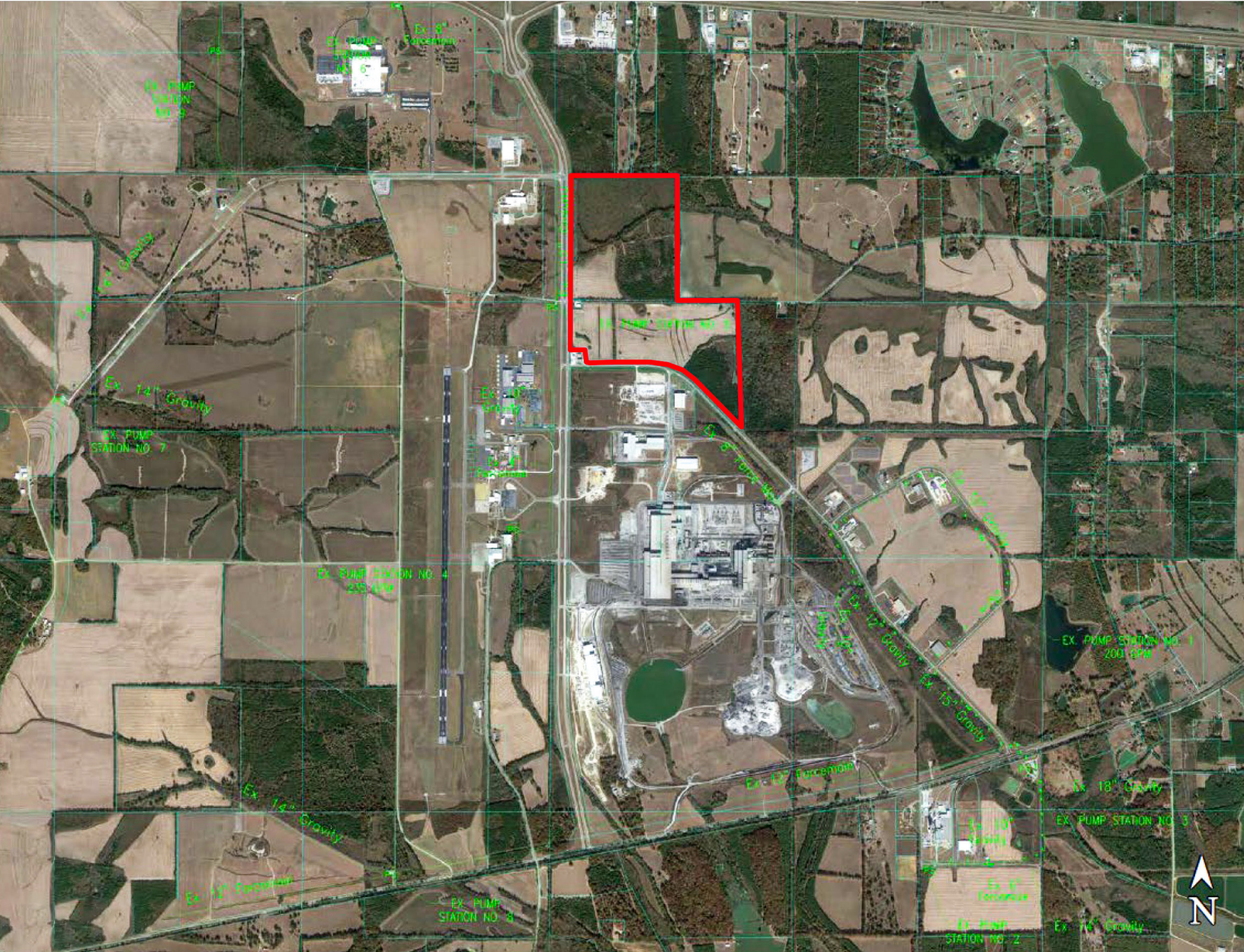
Columbus, MS



350+/- Acres

INDUSTRIAL SUBMARKET

SEWER MAP



Jeb Fields, SIOR, Dual Designation
Executive Vice President/Principal
+1 901 362 4315
jfields@commadv.com

Deborah McGill Smith, SIOR
EGS Commercial
+1 205 314 5534
dsmith@egsinc.com



Independently Owned and Operated / A Member of the Cushman & Wakefield Alliance

Cushman & Wakefield Copyright 01/09/23. No warranty or representation, express or implied, is made to the accuracy or completeness of the information contained herein, and same is submitted subject to errors, omissions, change of price, rental or other conditions, withdrawal without notice, and to any special listing conditions imposed by the property owner(s). As applicable, we make no representation as to the condition of the property (or properties) in question.

LAND FOR SALE

Columbus, MS



CUSHMAN & WAKEFIELD



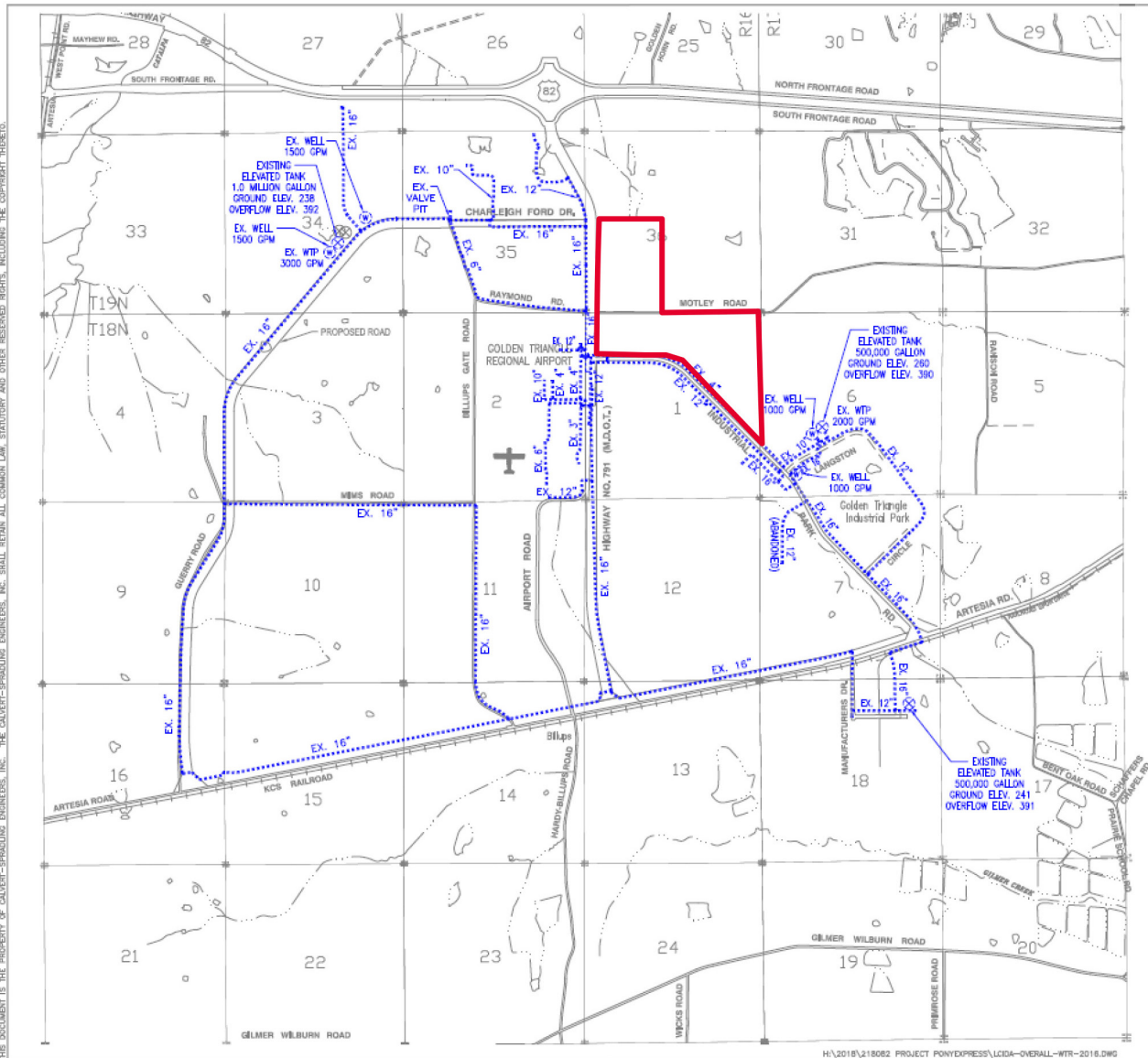
COMMERCIAL ADVISORS

EGS

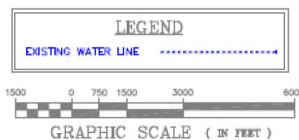
350+/- Acres

INDUSTRIAL SUBMARKET

UTILITIES



Water = 16" Line



CALVERT - SPRADLING ENGINEERS, INC. Consulting Engineers P. O. Box 1078 • Plains (888) 464-7101 West Point, Mississippi 39773		OVERALL WATER SYSTEM LAYOUT	
LOWNDEN COUNTY INDUSTRIAL DEVELOPMENT AUTHORITY LOWNDEN COUNTY, MS.		DESIGNED/SURVEYED BY DRAWN BY: WSJ & ESB	SHEET NO. 1
		CHECKED BY: CHL	DATE: 05-24-2018

Job Fields, SIOR, Dual Designation
 Executive Vice President/Principal
 + 1901 362 4315
 jfields@commadv.com

Deborah McGill Smith, SIOR
 EGS Commercial
 + 1205 314 5534
 dsmith@egsinc.com



CUSHMAN & WAKEFIELD



COMMERCIAL ADVISORS



Independently Owned and Operated / A Member of the Cushman & Wakefield Alliance

Cushman & Wakefield Copyright 01/09/23. No warranty or representation, express or implied, is made to the accuracy or completeness of the information contained herein, and same is submitted subject to errors, omissions, change of price, rental or other conditions, withdrawal without notice, and to any special listing conditions imposed by the property owner(s). As applicable, we make no representation as to the condition of the property (or properties) in question.