

COMMERCIAL SPACE FOR SALE

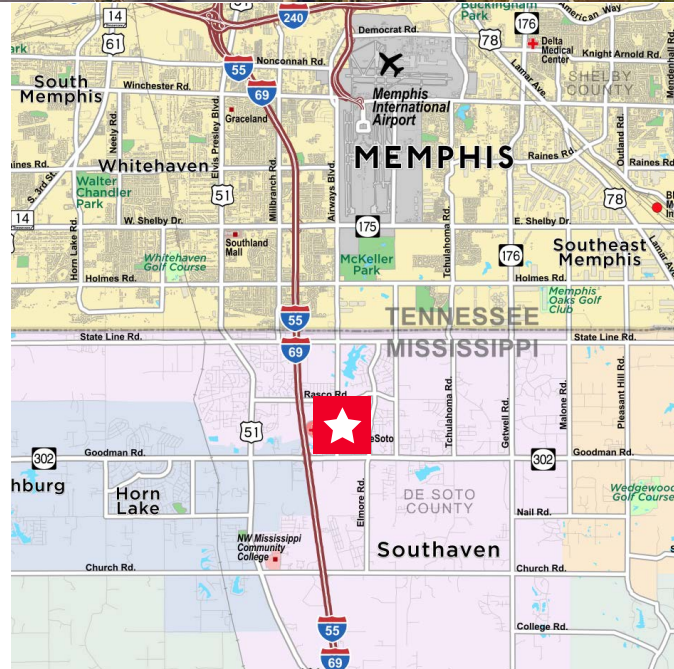
Commercial Land for Sale
0.75 Acres Available

Property Highlights

- Great medical or office development site
- Located in DeSoto County's medical corridor
- Excellent access to restaurants and retail
- Located at the northeast quadrant of Goodman Road and Airways Blvd.

Land Details

Asking Price	\$10.00 PSF
Total Acres	0.75 +/-



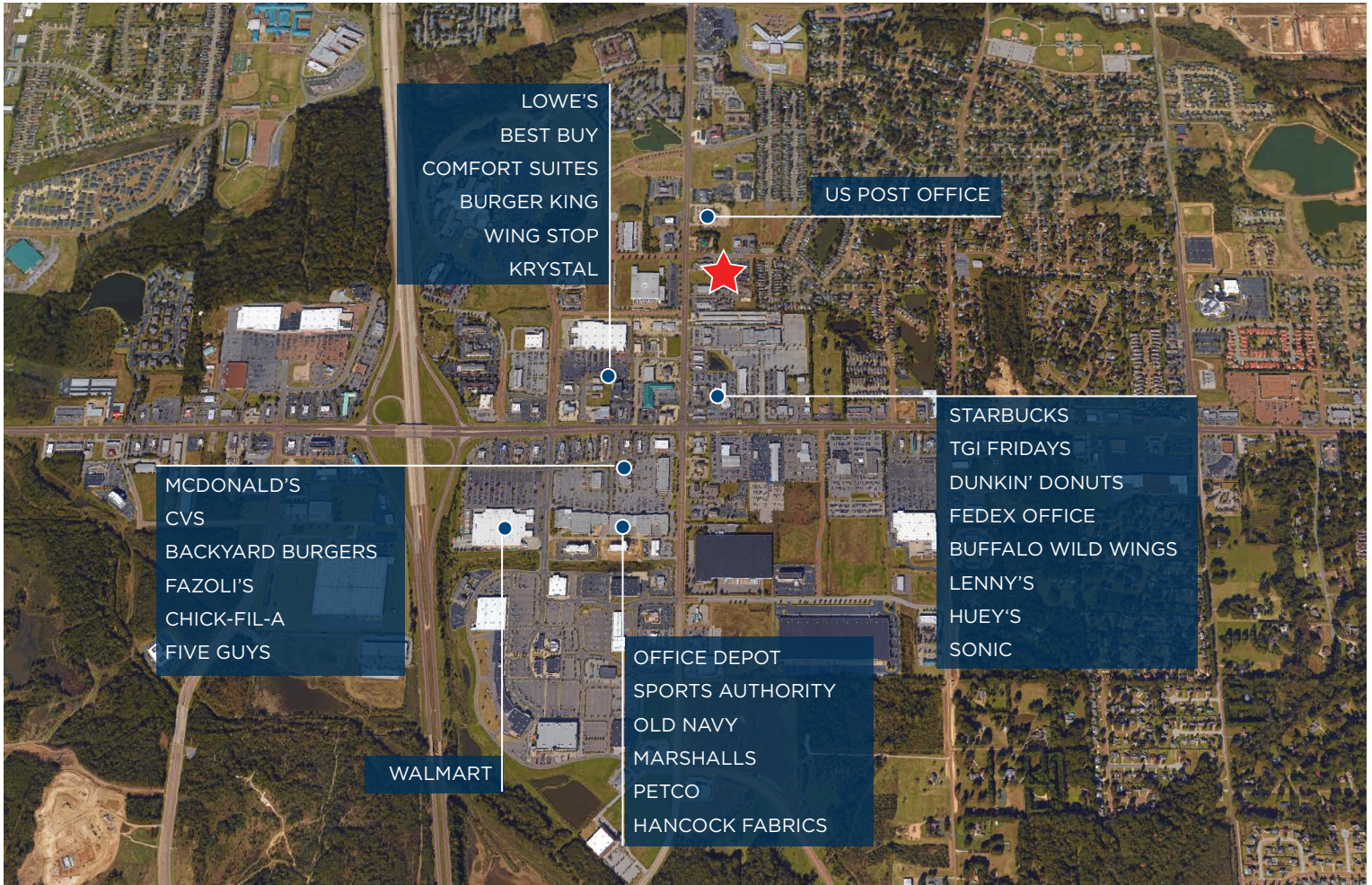
Matt Weathersby, SIOR, CCIM
 Principal
 901 362 4317
 mweathersby@commadv.com

Larry Jensen
 President/CEO
 901 273 2356
 ljensen@commadv.com

5101 Wheelis Drive, Suite 300
 Memphis, TN 38117
 Main: 901 366 6070
www.commadv.com

Independently Owned and Operated / A Member of the Cushman & Wakefield Alliance

Cushman & Wakefield Copyright 2015. No warranty or representation, express or implied, is made to the accuracy or completeness of the information contained herein, and same is submitted subject to errors, omissions, change of price, rental or other conditions, withdrawal without notice, and to any special listing conditions imposed by the property owner(s). As applicable, we make no representation as to the condition of the property (or properties) in question.



Demographics	1 MI	3 MI	5 MI
Population	7,220	49,689	111,784
Households	2,760	18,238	40,312
Average Income	\$54,662	\$54,474	\$54,646
Median Age	32.9	32.4	32.8

Matt Weathersby, SIOR, CCIM
Principal
901 362 4317
mweathersby@commadv.com

Larry Jensen
President/CEO
901 273 2356
ljensen@commadv.com

5101 Wheelis Drive, Suite 300
Memphis, TN 38117
Main: 901 366 6070
www.commadv.com

Independently Owned and Operated / A Member of the Cushman & Wakefield Alliance

Cushman & Wakefield Copyright 2015. No warranty or representation, express or implied, is made to the accuracy or completeness of the information contained herein, and same is submitted subject to errors, omissions, change of price, rental or other conditions, withdrawal without notice, and to any special listing conditions imposed by the property owner(s). As applicable, we make no representation as to the condition of the property (or properties) in question.