

GROUND LEASE AVAILABLE

2486 Poplar Ave

Memphis, TN 38112



CUSHMAN &
WAKEFIELD



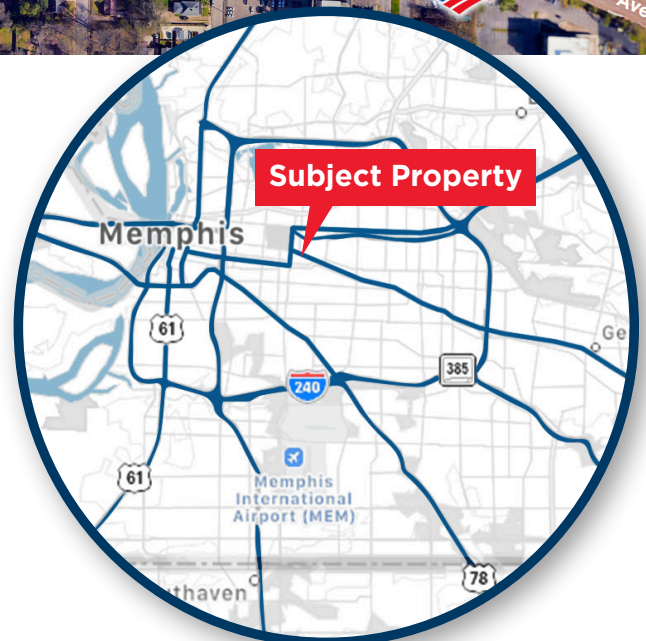
COMMERCIAL
ADVISORS



PROPERTY HIGHLIGHTS

- 0.886 Acres available for Ground Lease on Poplar Ave
- Zoned CMU-3
- Two existing curb cuts

TRAFFIC COUNTS: Poplar Ave – 14,917 VPD



Carson Claybrook

Senior Vice President- Retail Brokerage Services
901 252 6483
cclaybrook@commadv.com

5101 Wheelis Drive, Suite 300
Memphis, TN 38117
Main: 901 366 6070
www.commadv.com

Independently Owned and Operated / A Member of the Cushman & Wakefield Alliance

Cushman & Wakefield Copyright 04/24/25. No warranty or representation, express or implied, is made to the accuracy or completeness of the information contained herein, and same is submitted subject to errors, omissions, change of price, rental or other conditions, withdrawal without notice, and to any special listing conditions imposed by the property owner(s). As applicable, we make no representation as to the condition of the property (or properties) in question.

GROUND LEASE AVAILABLE

2486 Poplar Ave
Memphis, TN 38112

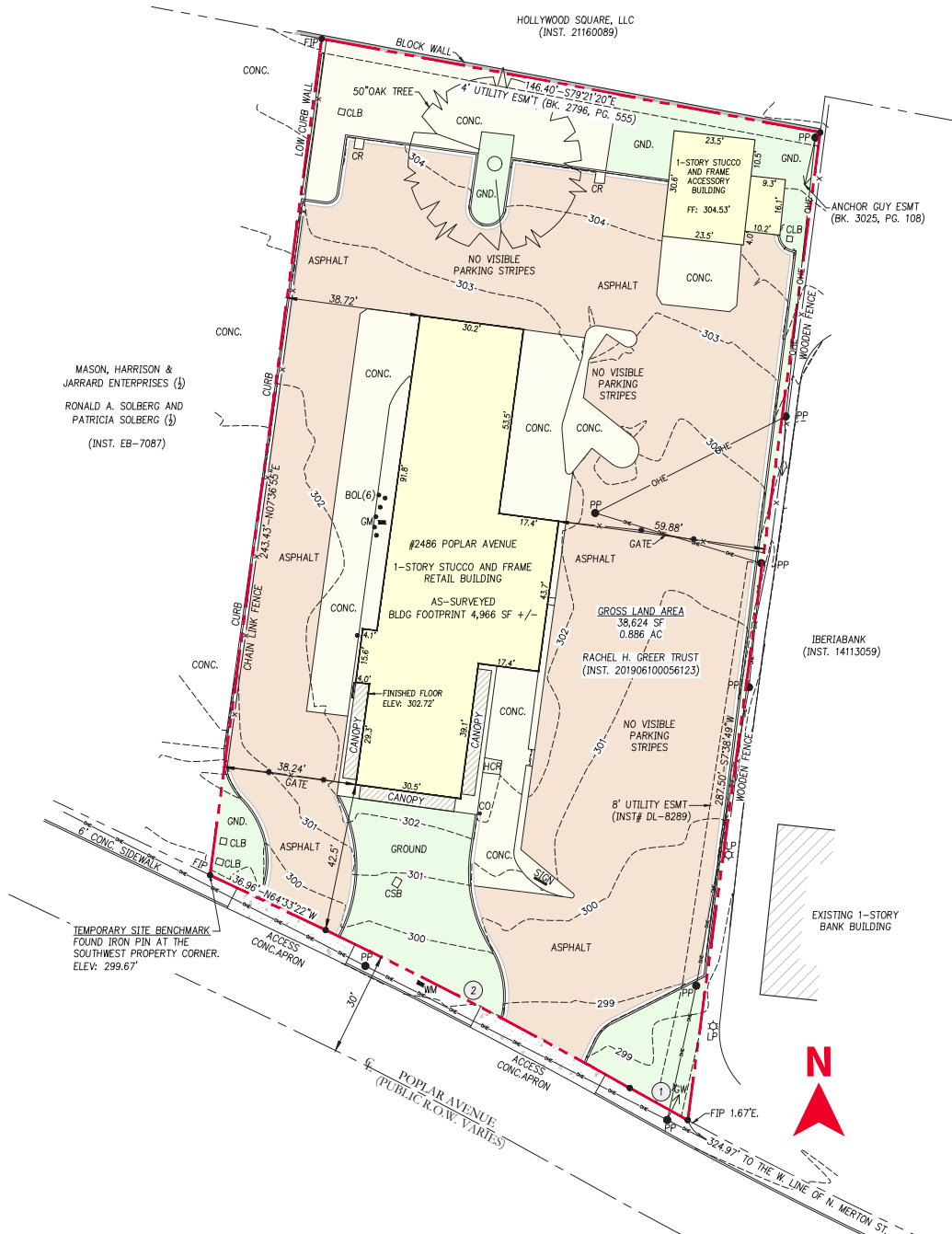


CUSHMAN &
WAKEFIELD



COMMERCIAL
ADVISORS

SITE SURVEY



Carson Claybrook
Senior Vice President- Retail Brokerage Services
901 252 6483
cclaybrook@commadv.com

5101 Wheelis Drive, Suite 300
Memphis, TN 38117
Main: 901 366 6070
www.commadv.com

Independently Owned and Operated / A Member of the Cushman & Wakefield Alliance

Cushman & Wakefield Copyright 04/24/25. No warranty or representation, express or implied, is made to the accuracy or completeness of the information contained herein, and same is submitted subject to errors, omissions, change of price, rental or other conditions, withdrawal without notice, and to any special listing conditions imposed by the property owner(s). As applicable, we make no representation as to the condition of the property (or properties) in question.