

**FOR LEASE**

Owned and Operated by



# Chickasaw Distribution Center

5950 Freeport Ave - Memphis TN



## 32,934 SF Available



### LEASING INFO & CONTACT

**Mark Jenkins, SIOR, CCIM**

(901) 366-6070 / [mjenkins@commadv.com](mailto:mjenkins@commadv.com)

**Kemp Conrad, SIOR, Dual Designation**

(901) 366-6070 / [kconrad@commadv.com](mailto:kconrad@commadv.com)

**Owen Mercer, SIOR, CCIM**

(901) 366-6070 / [omercer@commadv.com](mailto:omercer@commadv.com)

**Laura Meanwell, CCIM**

(901) 366-6070 / [lmeanwell@commadv.com](mailto:lmeanwell@commadv.com)



This is not an offer or acceptance of an offer to lease space. A lease will only be offered or made in a written agreement signed by landlord. No representation or warranty of any kind is made by landlord unless set forth in a written definitive lease executed by the landlord.



## PROPERTY HIGHLIGHTS

32,934 sf Available for lease

---

Approximately 28,234 sf HVAC warehouse space

---

24' clear

---

7 dock high doors (4 equipped)

---

3 van high doors

---

LED lights

---

## BUILDING FEATURES

<b>Total Building</b>	108,250 sf
-----------------------	------------

---

<b>Available Building</b>	32,934 sf
---------------------------	-----------

---

<b>Available Office</b>	4,700 sf
-------------------------	----------

---

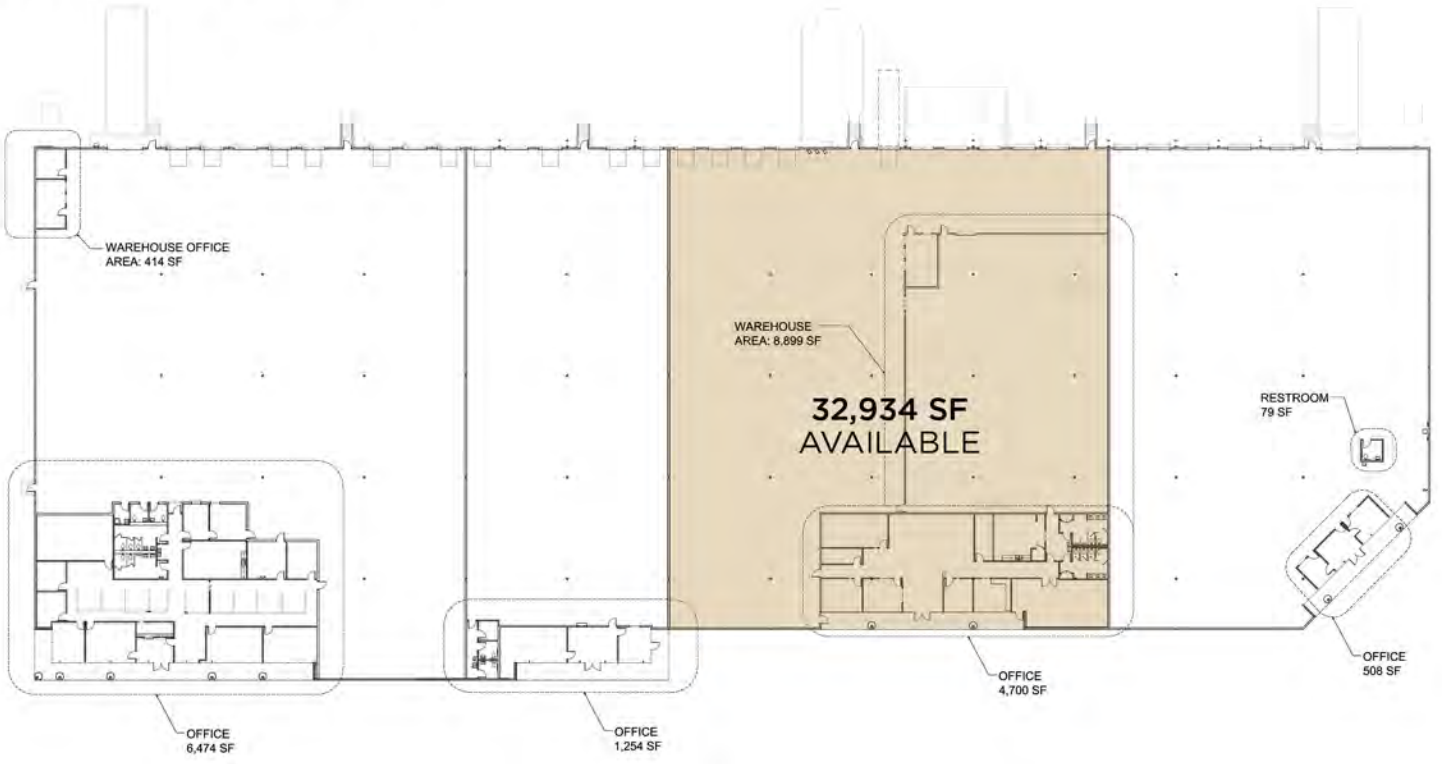
<b>Year Built</b>	2000
-------------------	------

---

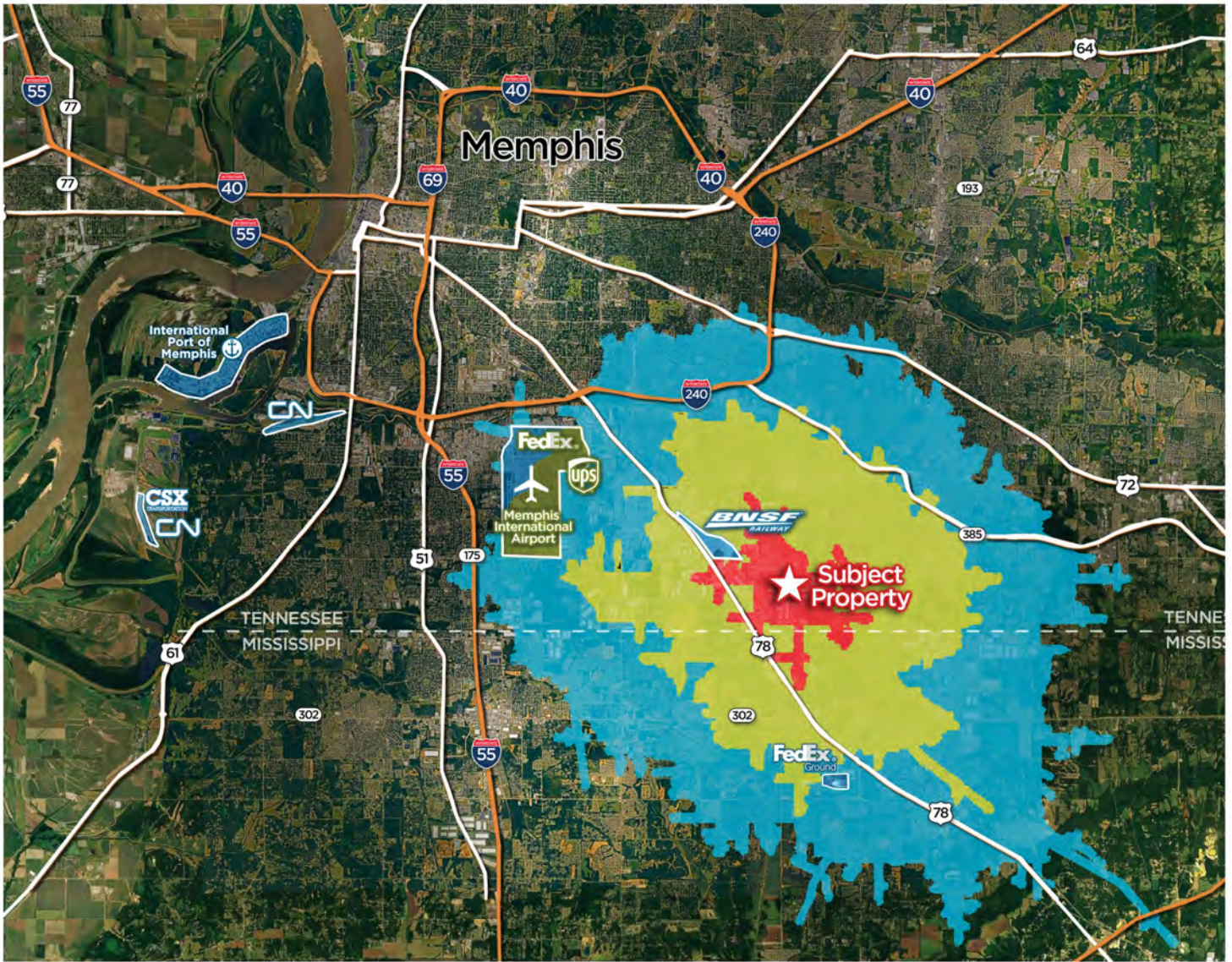
<b>Sprinkler</b>	ESFR
------------------	------

---








# SITE PLAN



# DRIVE TIME MAP



**Greater than 90% of the world's GDP is within 72 hours of Memphis**  
 75% of the U.S. population is within a 2 day drive (22 hours)

						
<b>16</b> MINS	<b>7</b> MINS	<b>18</b> MINS	<b>16</b> MINS	<b>21</b> MINS	<b>10</b> MINS	<b>48</b> MINS
<b>7</b> MILES	<b>3</b> MILE	<b>11</b> MILES	<b>8</b> MILES	<b>33</b> MILES	<b>9</b> MILES	<b>43</b> MILES