

36 & 76 CAPITAL WAY

Atoka, TN 38004

RETAIL SPACE AVAILABLE

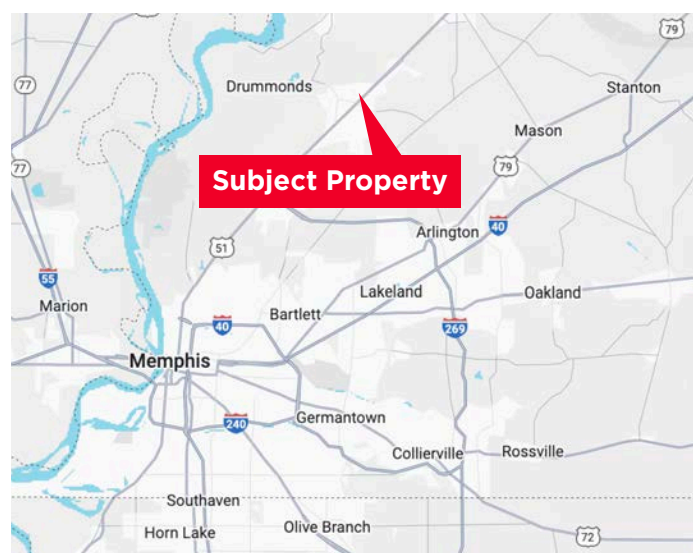


+/- 1,950 SF RETAIL SPACE AVAILABLE

Commercial Advisors is pleased to present 36 & 76 Capital Way in Atoka TN available for lease. The property has 1,950 square feet of move in ready medical space. The space is equipped with four exam rooms, a lab, staff breakroom and separate staff and patient restrooms. Come join other medical providers at Atoka's premier medical property.

PROPERTY HIGHLIGHTS

- Space Size: 1,950 square feet
- Asking Rate: \$17 MG
- Neighboring Tenants: Midsouth Foot & Ankle Specialists, Baptist Rehabilitation, Baptist Pediatrics, Methodist Primary Care, & SMZ Specialists



Conner Walker
Vice President
901 362 9862
cwalker@commadv.com

5101 Wheelis Drive, Suite 300
Memphis, TN 38117
Main: 901 366 6070
www.commadv.com

Independently Owned and Operated / A Member of the Cushman & Wakefield Alliance

Cushman & Wakefield Copyright 09/11/24. No warranty or representation, express or implied, is made to the accuracy or completeness of the information contained herein, and same is submitted subject to errors, omissions, change of price, rental or other conditions, withdrawal without notice, and to any special listing conditions imposed by the property owner(s). As applicable, we make no representation as to the condition of the property (or properties) in question.

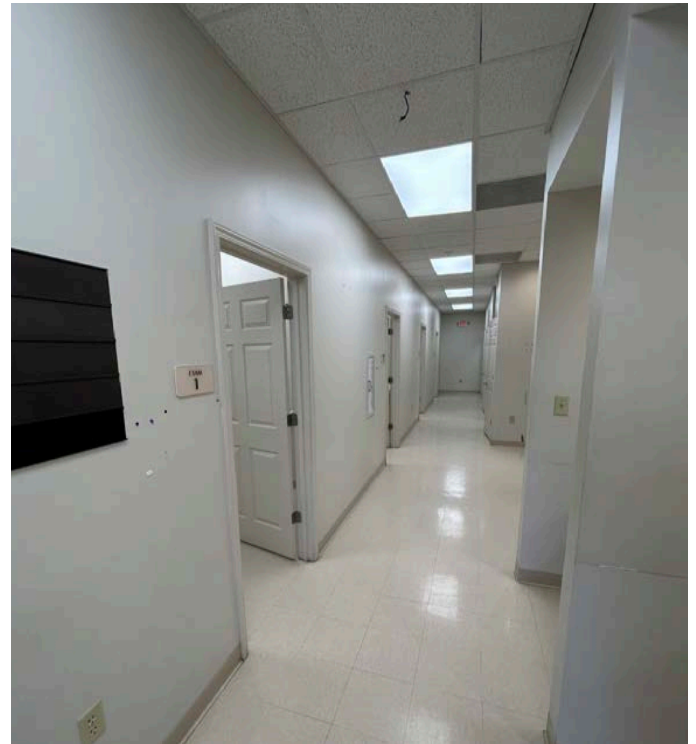
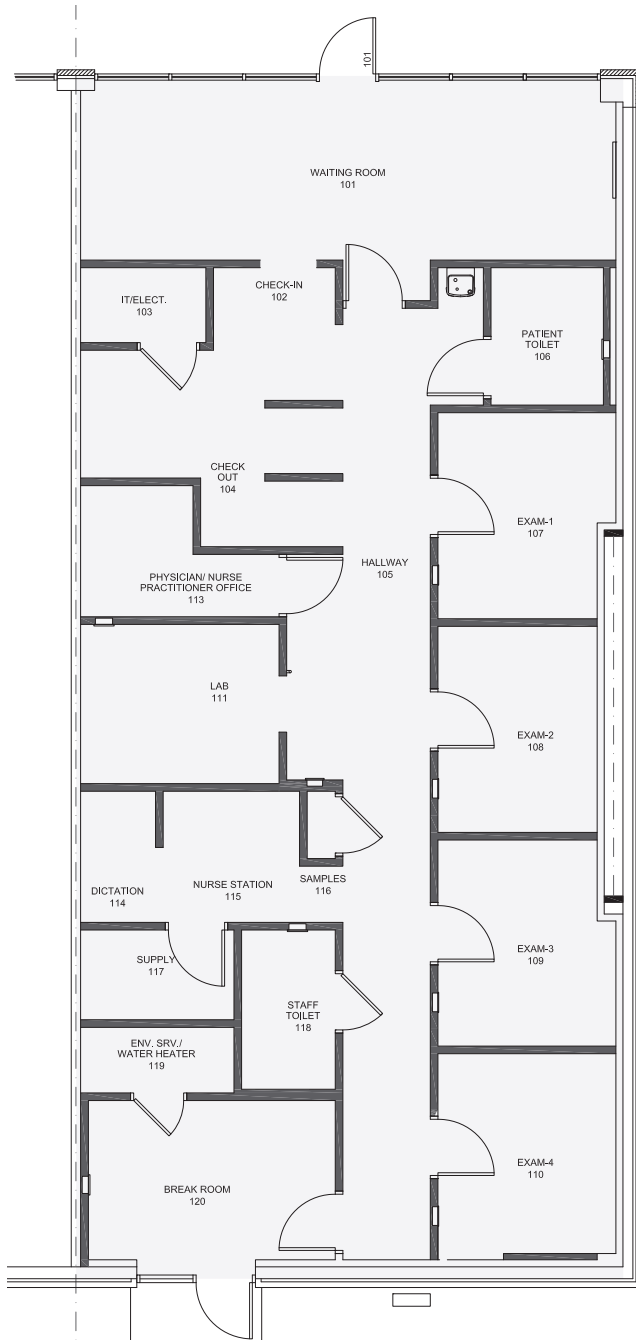
36 & 76 CAPITAL WAY

Atoka, TN 38004

RETAIL SPACE AVAILABLE



FLOOR PLAN



Conner Walker
Vice President
901 362 9862
cwalker@commadv.com

5101 Wheelis Drive, Suite 300
Memphis, TN 38117
Main: 901 366 6070
www.commadv.com

Independently Owned and Operated / A Member of the Cushman & Wakefield Alliance

Cushman & Wakefield Copyright 09/11/24. No warranty or representation, express or implied, is made to the accuracy or completeness of the information contained herein, and same is submitted subject to errors, omissions, change of price, rental or other conditions, withdrawal without notice, and to any special listing conditions imposed by the property owner(s). As applicable, we make no representation as to the condition of the property (or properties) in question.