

ORLEANS STATION

MEMPHIS, TN - MEDICAL DISTRICT

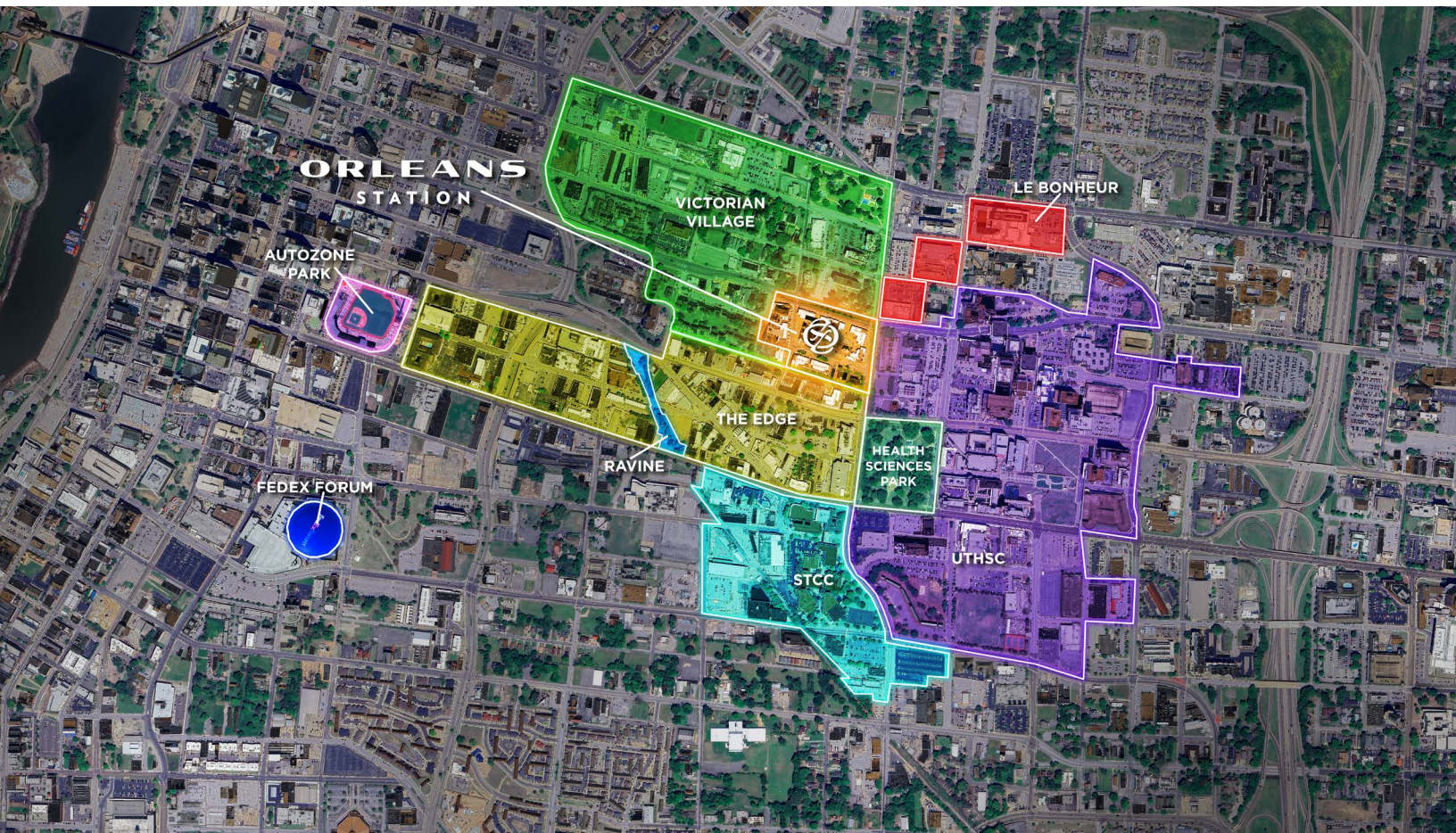
WHERE *the* UNIVERSITY
MEETS *the* EDGE



ORLEANS STATION

MEMPHIS, TN - MEDICAL DISTRICT

WHERE *the* UNIVERSITY
MEETS *the* EDGE



PROPERTY HIGHLIGHTS

- Retail space located in the heart of the medical district
- Pedestrian focused: walk/bike to Downtown, the Edge, Midtown
- Landscaped outdoor seating areas with emphasis on connections to streetscape
- 180-space parking plaza
- Daytime pop of 33,000 employees, students, and over 10,000 residents

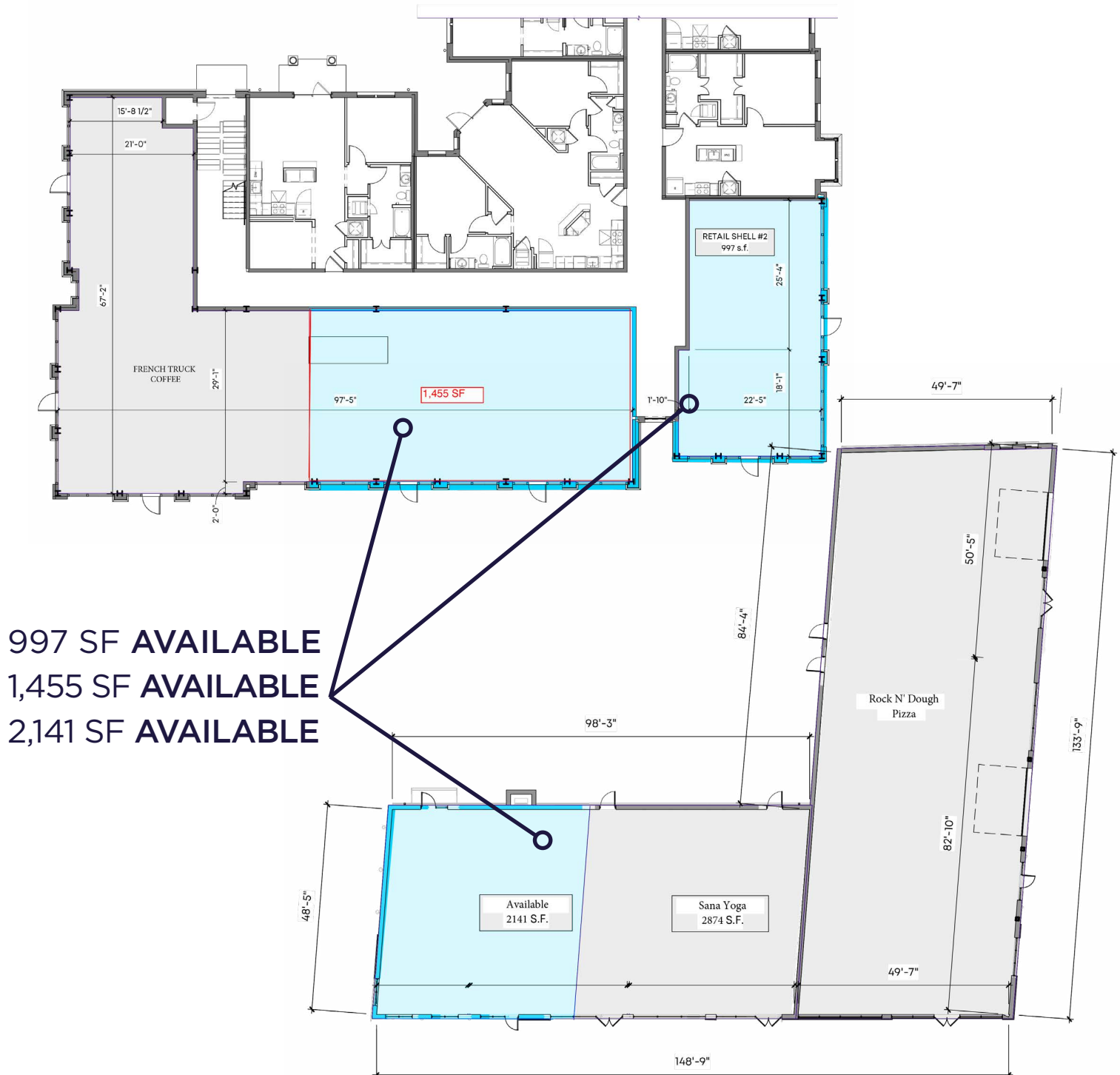
AREA KEY

	ORLEANS STATION
	AUTOZONE PARK
	FEDEX FORUM
	THE EDGE DISTRICT
	THE REVINE
	SOUTHWEST TN COMMUNITY COLLEGE
	VICTORIAN VILLAGE
	LE BONHEUR, REGIONAL ONE, HEALTH DEPARTMENT
	UNIVERSITY OF TN HEALTH SCIENCE CENTER
	HEALTH SCIENCE PARK

ORLEANS STATION

MEMPHIS, TN - MEDICAL DISTRICT

WHERE *the* UNIVERSITY
MEETS *the* EDGE



ORLEANS STATION

MEMPHIS, TN - MEDICAL DISTRICT

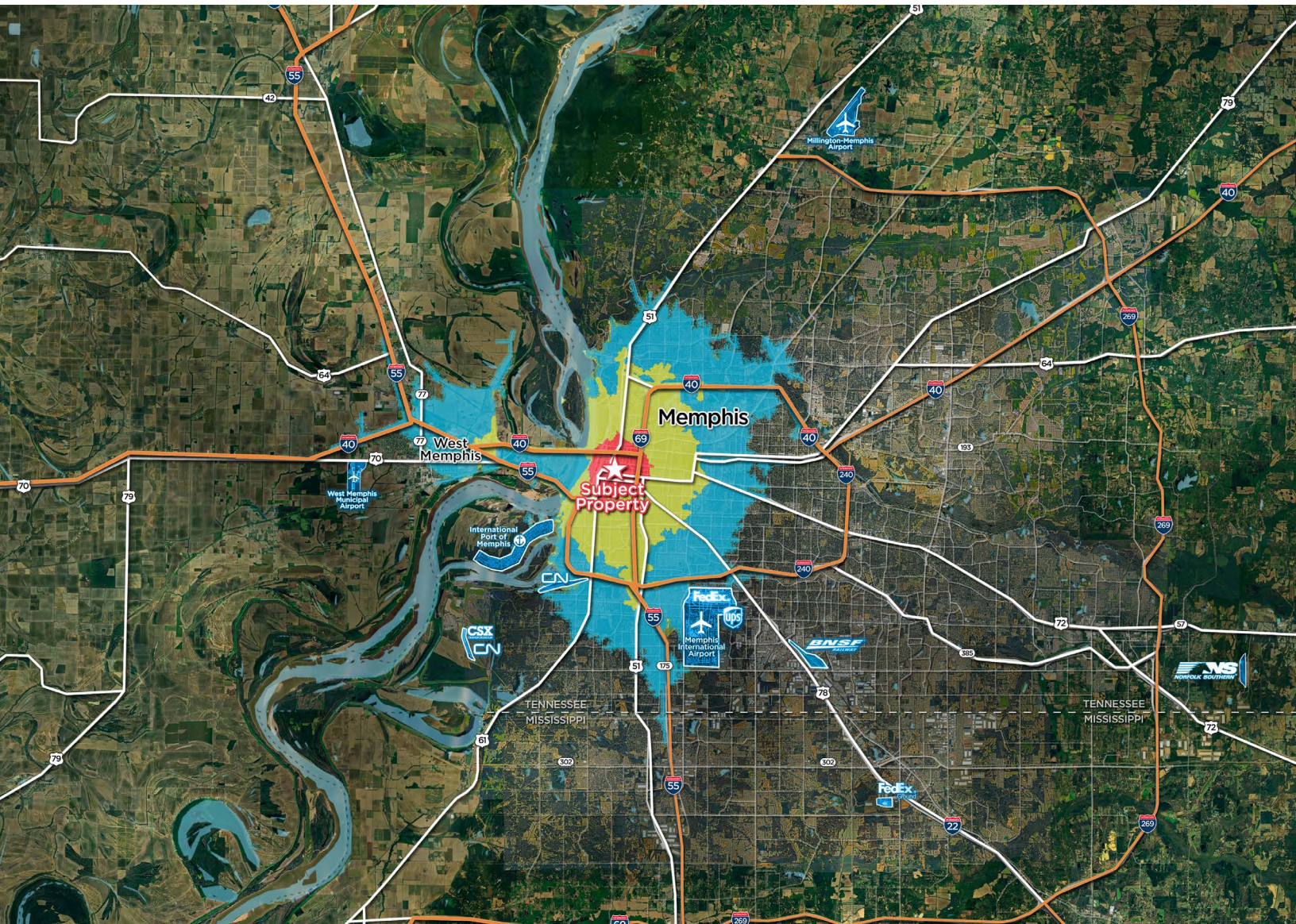
WHERE *the* UNIVERSITY
MEETS *the* EDGE

DRIVE TIME MAP

5 MINS

10 MINS

15 MINS



Carson Claybrook
Vice President- Retail Brokerage Services
901 252 6483
cclaybrook@commadv.com

5101 Wheelis Drive, Suite 300
Memphis, TN 38117
Main: 901 366 6070
www.commadv.com

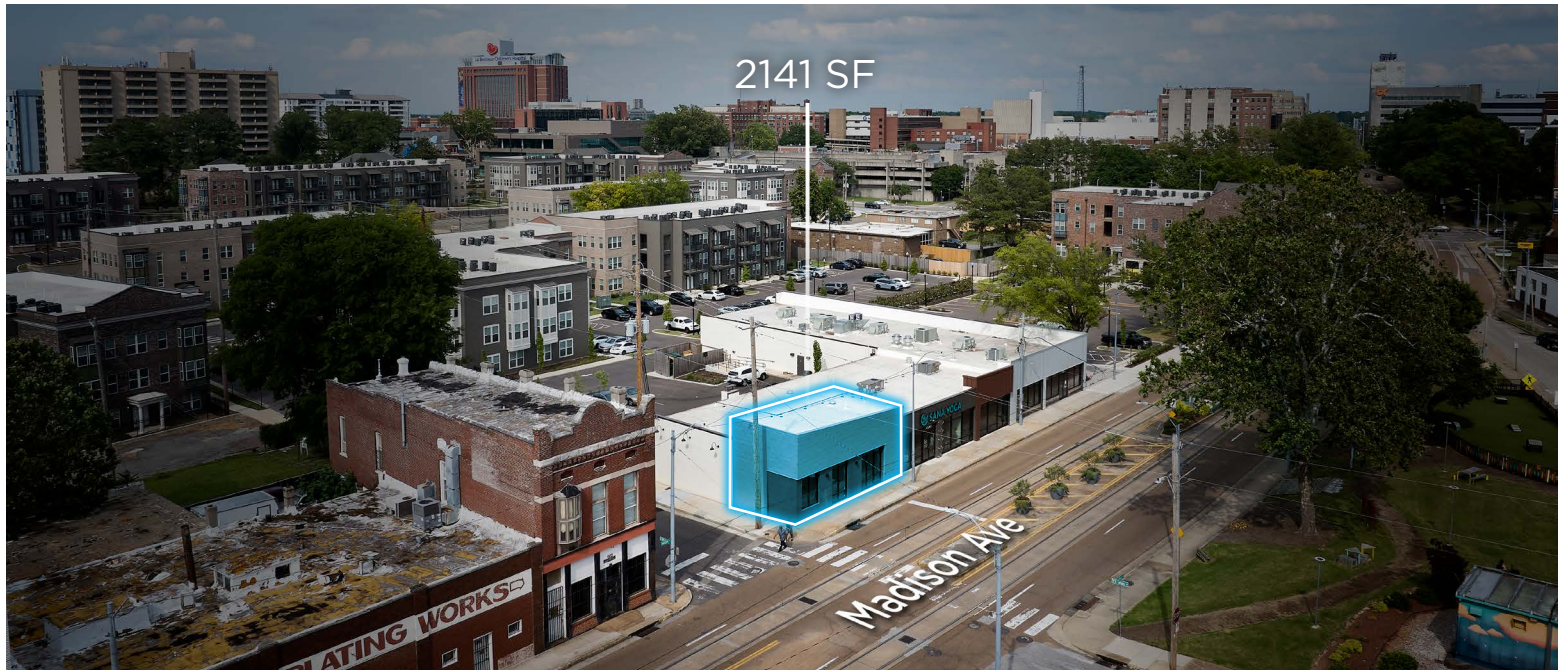
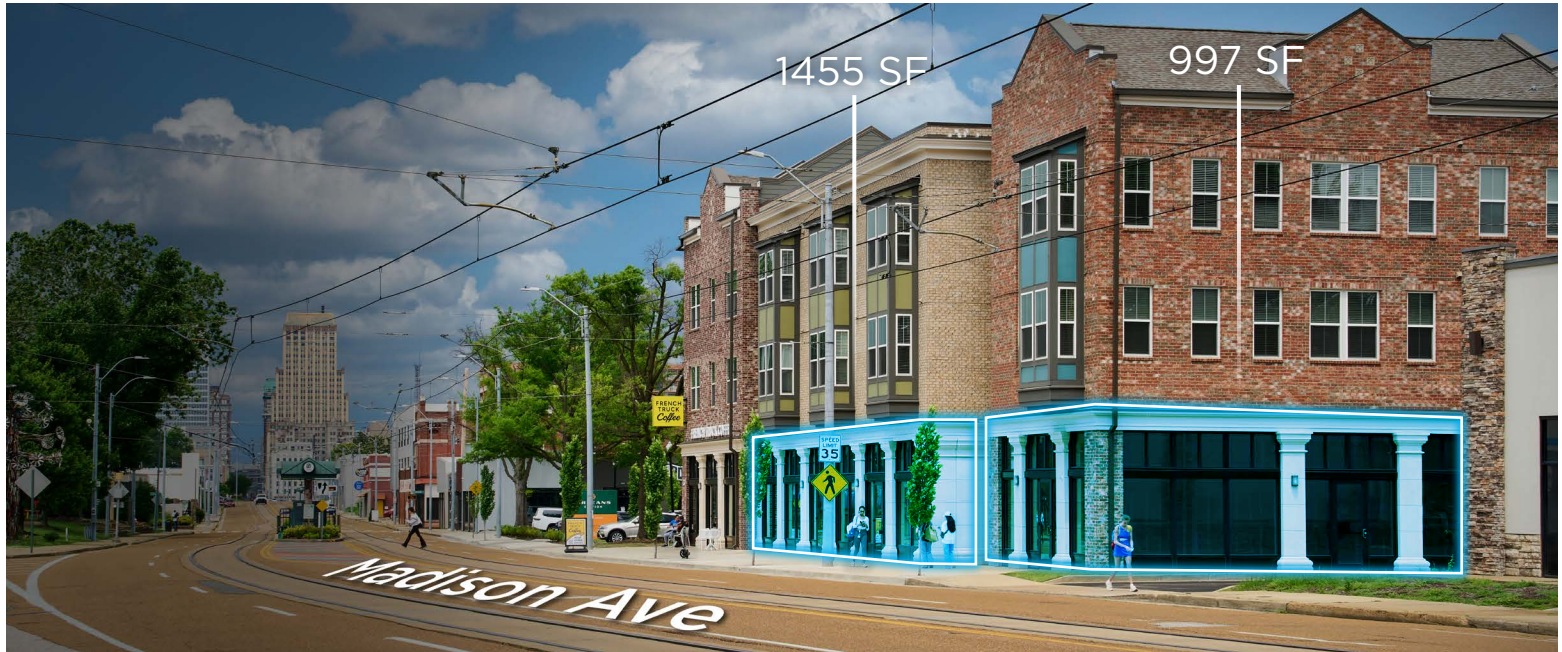
Independently Owned and Operated / A Member of the Cushman & Wakefield Alliance

Cushman & Wakefield Copyright 10/31/24. No warranty or representation, express or implied, is made to the accuracy or completeness of the information contained herein, and same is submitted subject to errors, omissions, change of price, rental or other conditions, withdrawal without notice, and to any special listing conditions imposed by the property owner(s). As applicable, we make no representation as to the condition of the property (or properties) in question.

ORLEANS STATION

MEMPHIS, TN - MEDICAL DISTRICT

WHERE *the* UNIVERSITY
MEETS *the* EDGE



Carson Claybrook
Vice President- Retail Brokerage Services
901 252 6483
cclaybrook@commadv.com

5101 Wheelis Drive, Suite 300
Memphis, TN 38117
Main: 901 366 6070
www.commadv.com

Independently Owned and Operated / A Member of the Cushman & Wakefield Alliance

Cushman & Wakefield Copyright 10/31/24. No warranty or representation, express or implied, is made to the accuracy or completeness of the information contained herein, and same is submitted subject to errors, omissions, change of price, rental or other conditions, withdrawal without notice, and to any special listing conditions imposed by the property owner(s). As applicable, we make no representation as to the condition of the property (or properties) in question.