

INDUSTRIAL SPACE FOR LEASE

STATELINE

BUSINESS PARK BLDG D

8680 SWINNEA RD | SOUTHAVEN, MS 38671



INDUSTRIAL SPACE FOR LEASE

257,760 SF AVAILABLE

PROPERTY HIGHLIGHTS

- 32' clear
- Cross dock
- Column spacing: 54' x 50'
- Speed bays: 54' x 60'
- Building depth: 520'
- 5,804 SF main office
- 9,222 SF climate controlled room
- Shipping/Receiving: 1,500 SF (two separate offices)
- Truck courts: 180'
- 38 trailer spaces
- 190 auto spaces
- ESFR sprinkler system
- T5 lights with sensors
- 50 Dock High Doors (9' x 10')-34 fully equipped (levelers, seals, lights and dock locks)
- One (1) drive-in door (14' x 16')
- 20 Battery Charging Stations



Mark Jenkins, SIOR, CCIM
Principal
901 362 9870
mjenkins@commadv.com

Kemp Conrad, SIOR, Dual Designation
Principal
901 273 2359
kconrad@commadv.com

Owen Mercer, SIOR, CCIM
Vice President
901 273 2343
omercer@commadv.com

Laura Meanwell, CCIM
Associate Vice President
901 246 1230
lmeanwell@commadv.com

5101 Wheelis Drive, Suite 300
Memphis, TN 38117
Main: 901 366 6070
www.commadv.com

Independently Owned and Operated / A Member of the Cushman & Wakefield Alliance

Cushman & Wakefield Copyright 01/28/24. No warranty or representation, express or implied, is made to the accuracy or completeness of the information contained herein, and same is submitted subject to errors, omissions, change of price, rental or other conditions, withdrawal without notice, and to any special listing conditions imposed by the property owner(s). As applicable, we make no representation as to the condition of the property (or properties) in question.

INDUSTRIAL SPACE FOR LEASE

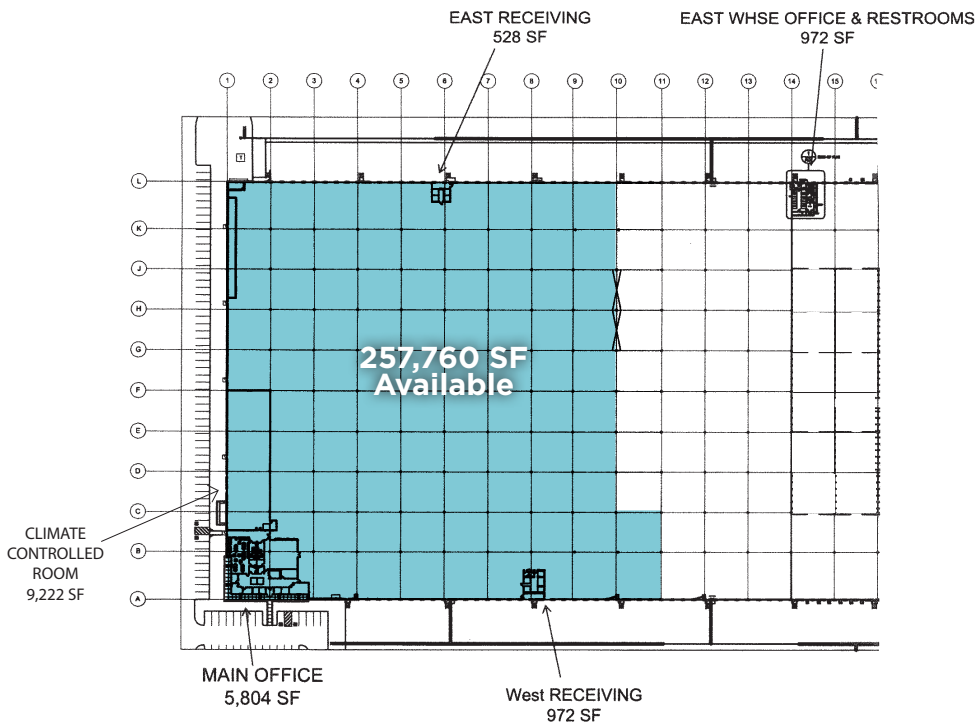
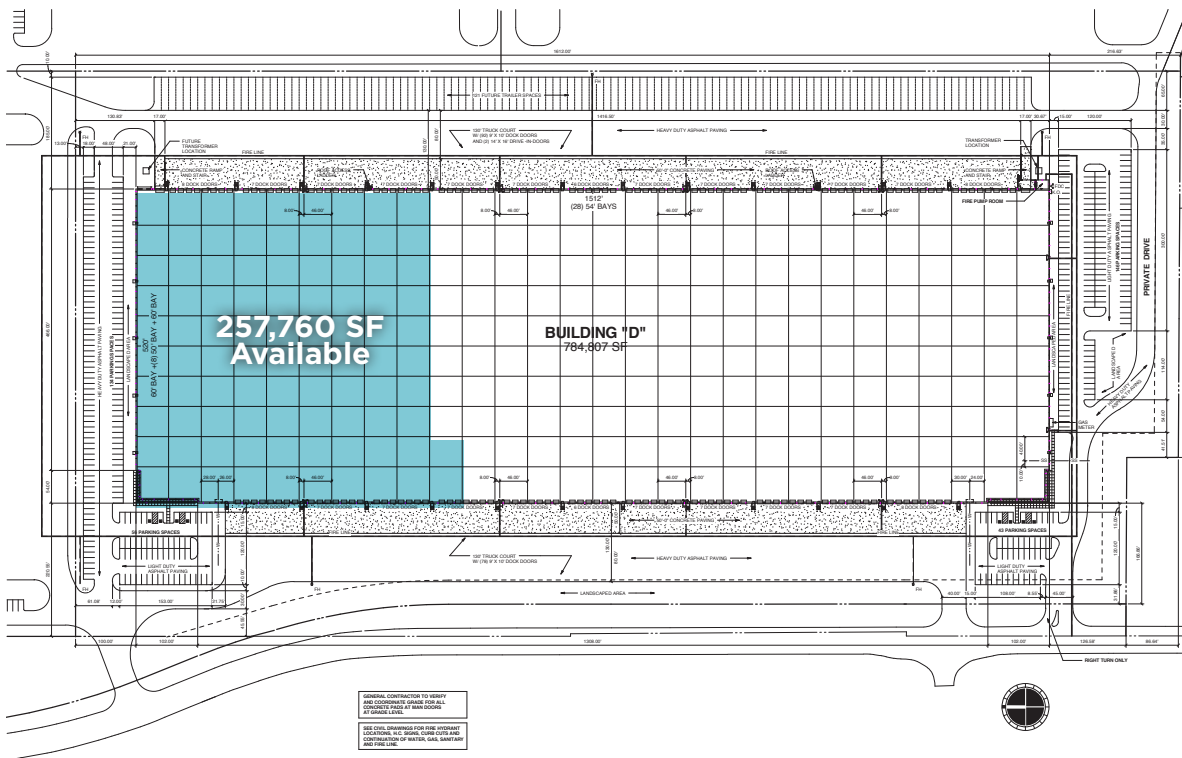
STATELINE

BUSINESS PARK BLDG D

8680 SWINNEA RD | SOUTHAVEN, MS 38671



SITE PLAN



Independently Owned and Operated / A Member of the Cushman & Wakefield Alliance

Cushman & Wakefield Copyright 01/28/24. No warranty or representation, express or implied, is made to the accuracy or completeness of the information contained herein, and same is submitted subject to errors, omissions, change of price, rental or other conditions, withdrawal without notice, and to any special listing conditions imposed by the property owner(s). As applicable, we make no representation as to the condition of the property (or properties) in question.

INDUSTRIAL SPACE FOR LEASE

STATELINE

BUSINESS PARK BLDG D

8680 SWINNEA RD | SOUTHAVEN, MS 38671



THE PROPERTY



Mark Jenkins, SIOR, CCIM
Principal
901 362 9870
mjenkins@commadv.com

Kemp Conrad, SIOR, Dual Designation
Principal
901 273 2359
kconrad@commadv.com

Owen Mercer, SIOR, CCIM
Vice President
901 273 2343
omercer@commadv.com

Laura Meanwell, CCIM
Associate Vice President
901 246 1230
lmeanwell@commadv.com

5101 Wheelis Drive, Suite 300
Memphis, TN 38117
Main: 901 366 6070
www.commadv.com

Independently Owned and Operated / A Member of the Cushman & Wakefield Alliance

Cushman & Wakefield Copyright 01/28/24. No warranty or representation, express or implied, is made to the accuracy or completeness of the information contained herein, and same is submitted subject to errors, omissions, change of price, rental or other conditions, withdrawal without notice, and to any special listing conditions imposed by the property owner(s). As applicable, we make no representation as to the condition of the property (or properties) in question.

INDUSTRIAL SPACE FOR LEASE

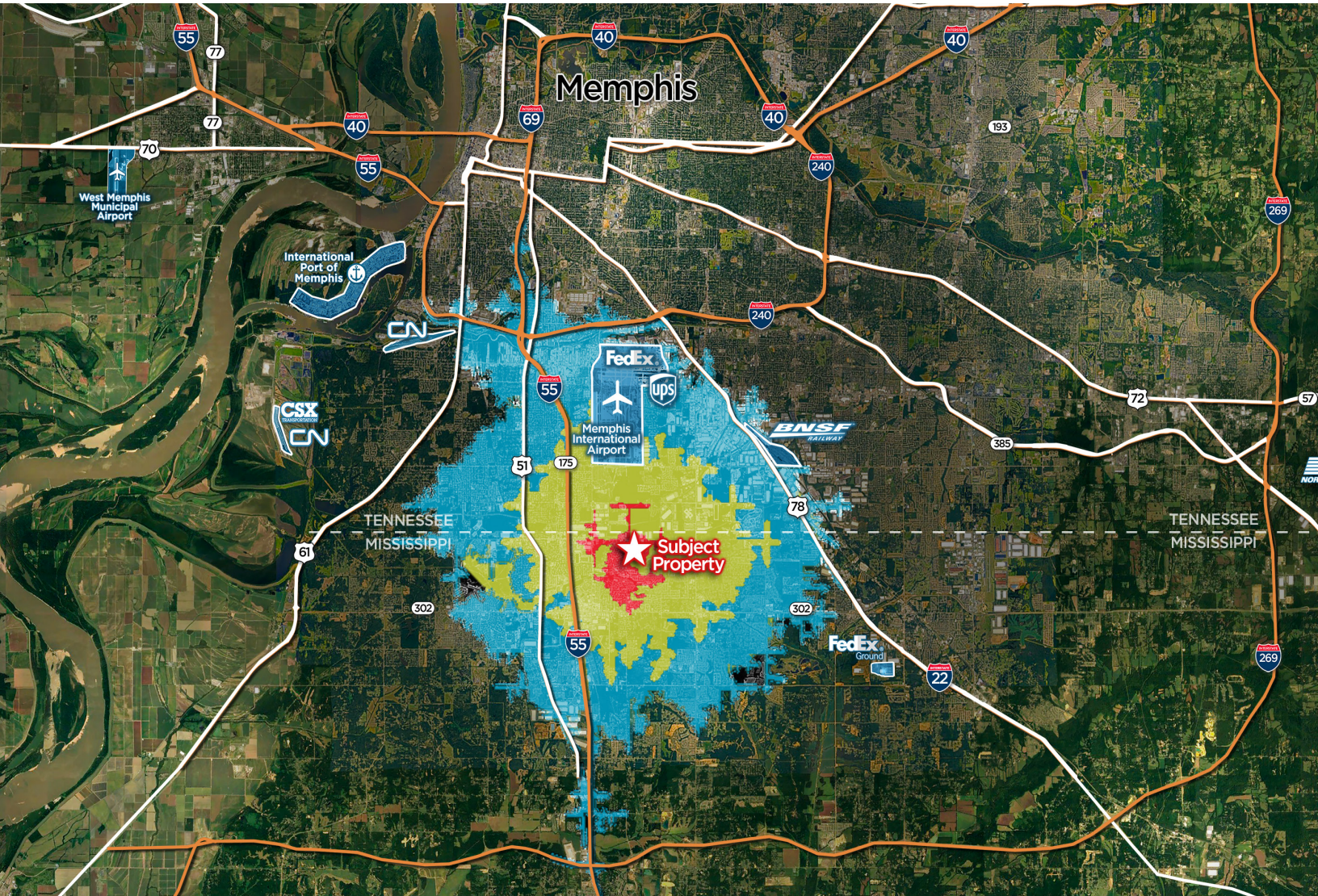
STATELINE

BUSINESS PARK BLDG D

8680 SWINNEA RD | SOUTHAVEN, MS 38671



DRIVE TIME MAP



	5 MINS						
	7 MINS	5 MINS	28 MINS	12 MINS	17 MINS	43 MINS	51 MINS
	4 MILES	2 MILES	20 MILES	6 MILES	11 MILES	28 MILES	48 MILES

Independently Owned and Operated / A Member of the Cushman & Wakefield Alliance

Cushman & Wakefield Copyright 01/28/24. No warranty or representation, express or implied, is made to the accuracy or completeness of the information contained herein, and same is submitted subject to errors, omissions, change of price, rental or other conditions, withdrawal without notice, and to any special listing conditions imposed by the property owner(s). As applicable, we make no representation as to the condition of the property (or properties) in question.