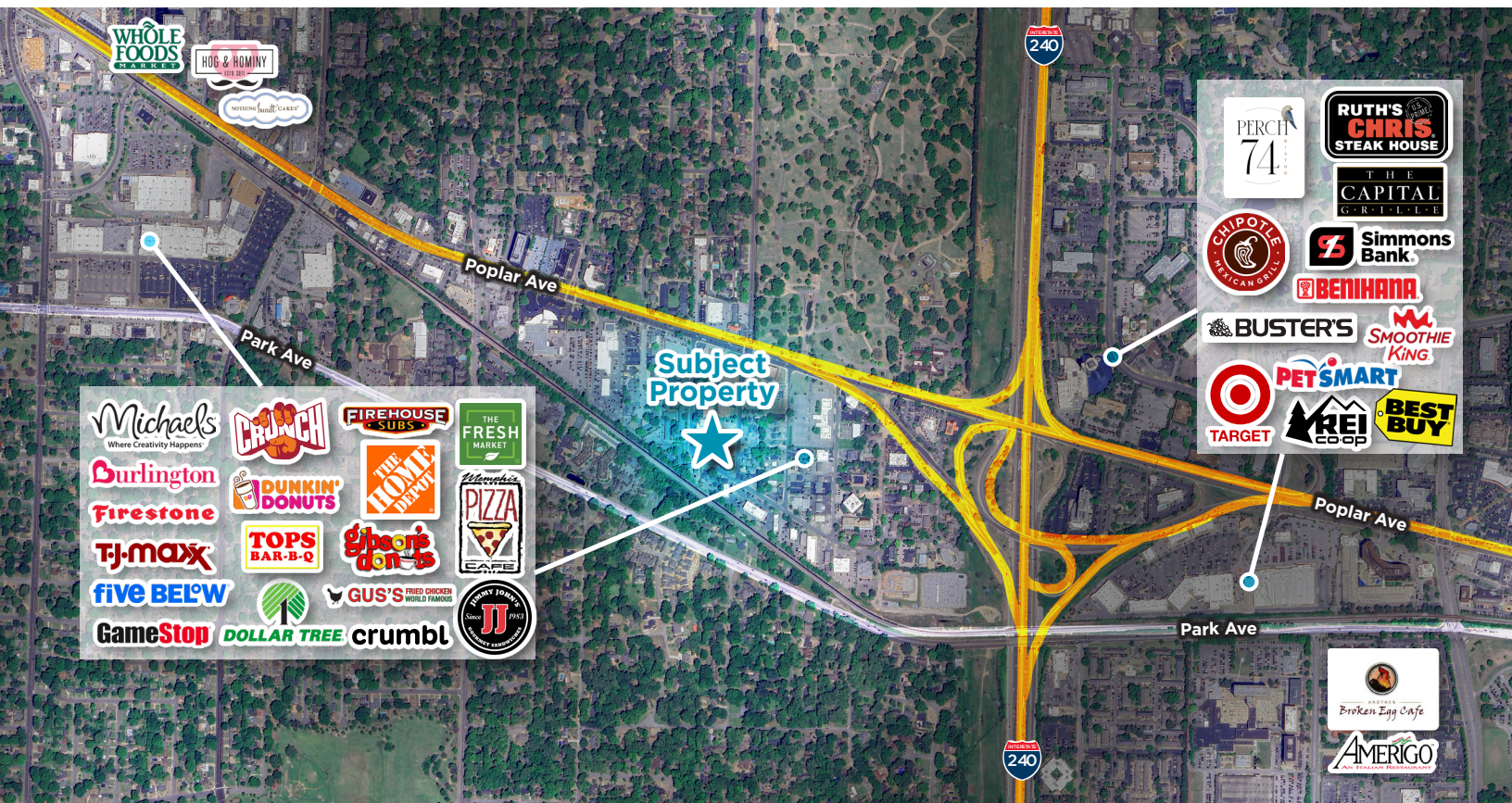


# 1038 S YATES

Memphis, TN 38119

OFFICE SPACE AVAILABLE

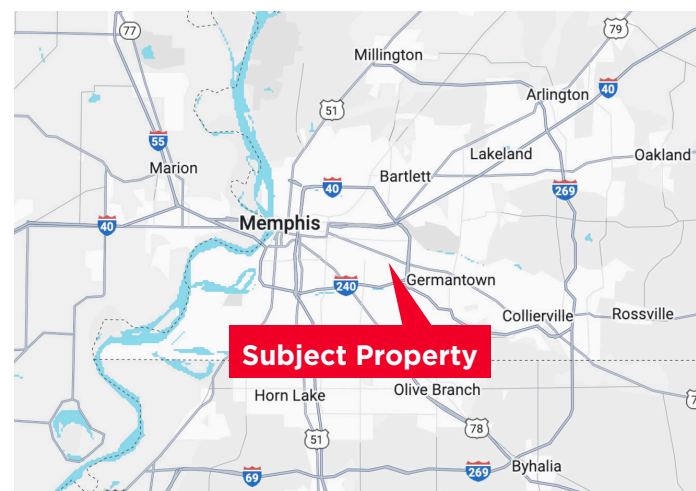


## +/- 1,897 SF MEDICAL OFFICE SPACE AVAILABLE

Commercial Advisors is pleased to present the medical office space at 1038 S Yates for sale. The property is located directly next to Erling Jensen's Restaurant. Currently built out for medical space, the property would be a great fit for a doctor's office, salon, or general office.

### PROPERTY HIGHLIGHTS

- Sq Ft: 1,897
- Asking Price: \$525,000



**Conner Walker**  
Vice President  
901 362 9862  
cwalker@commadv.com

5101 Wheelis Drive, Suite 300  
Memphis, TN 38117  
Main: 901 366 6070  
[www.commadv.com](http://www.commadv.com)

*Independently Owned and Operated / A Member of the Cushman & Wakefield Alliance*

Cushman & Wakefield Copyright 11/25/24. No warranty or representation, express or implied, is made to the accuracy or completeness of the information contained herein, and same is submitted subject to errors, omissions, change of price, rental or other conditions, withdrawal without notice, and to any special listing conditions imposed by the property owner(s). As applicable, we make no representation as to the condition of the property (or properties) in question.



# 1038 S YATES

Memphis, TN 38119

OFFICE SPACE AVAILABLE



CUSHMAN &  
WAKEFIELD



COMMERCIAL  
ADVISORS

## THE PROPERTY



**Conner Walker**  
Vice President  
901 362 9862  
cwalker@commadv.com

5101 Wheelis Drive, Suite 300  
Memphis, TN 38117  
Main: 901 366 6070  
[www.commadv.com](http://www.commadv.com)

*Independently Owned and Operated / A Member of the Cushman & Wakefield Alliance*

Cushman & Wakefield Copyright 11/25/24. No warranty or representation, express or implied, is made to the accuracy or completeness of the information contained herein, and same is submitted subject to errors, omissions, change of price, rental or other conditions, withdrawal without notice, and to any special listing conditions imposed by the property owner(s). As applicable, we make no representation as to the condition of the property (or properties) in question.