

9062 Valley Crest Ln

Suite 201 - Memphis, TN 38138

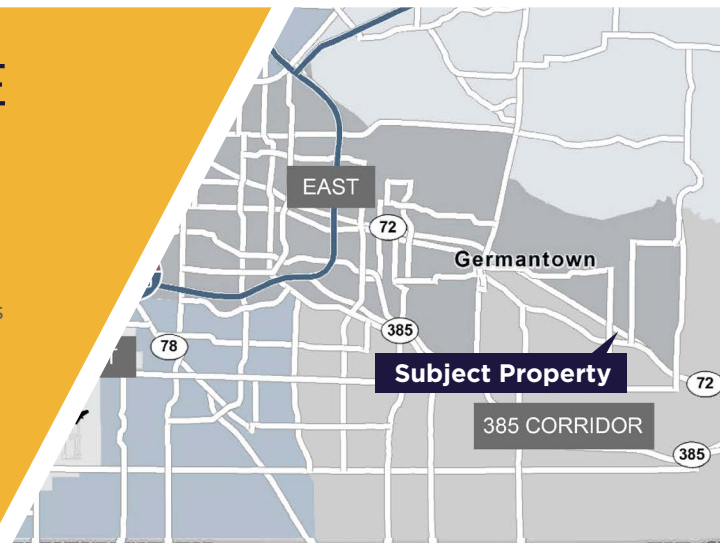
±1,300 SF **OFFICE CONDO** AVAILABLE



OFFICE CONDO FOR LEASE

Property Highlights

- Office Condo Available For Lease
- (NW Corner of Poplar Pike and Forrest Hill Irene)
- Easy access from Poplar Ave, Forrest Hill Irene and Poplar Pike
- Equipped with 3-4 offices, 1 conference room, 2 storage rooms and an internal Bathroom
- +/- 1,300 SF
- Available JAN 2025
- Great Parking
- Located in Corporate Gardens office Complex
- Close proximity to upscale restaurants, retail, banks, etc.
- Potential furniture availability



Caleb Park, SIOR
Associate Vice President
901 362 3454
cpark@commadv.com

5101 Wheelis Drive
Suite 300
Memphis, TN 38117
Main: 901 366 6070
www.commadv.com

Independently Owned and Operated / A Member of the Cushman & Wakefield Alliance

Cushman & Wakefield Copyright 11/05/24. No warranty or representation, express or implied, is made to the accuracy or completeness of the information contained herein, and same is submitted subject to errors, omissions, change of price, rental or other conditions, withdrawal without notice, and to any special listing conditions imposed by the property owner(s). As applicable, we make no representation as to the condition of the property (or properties) in question.

9062 Valley Crest Ln

Suite 201 - Memphis, TN 38138

±1,300 SF **OFFICE CONDO** AVAILABLE

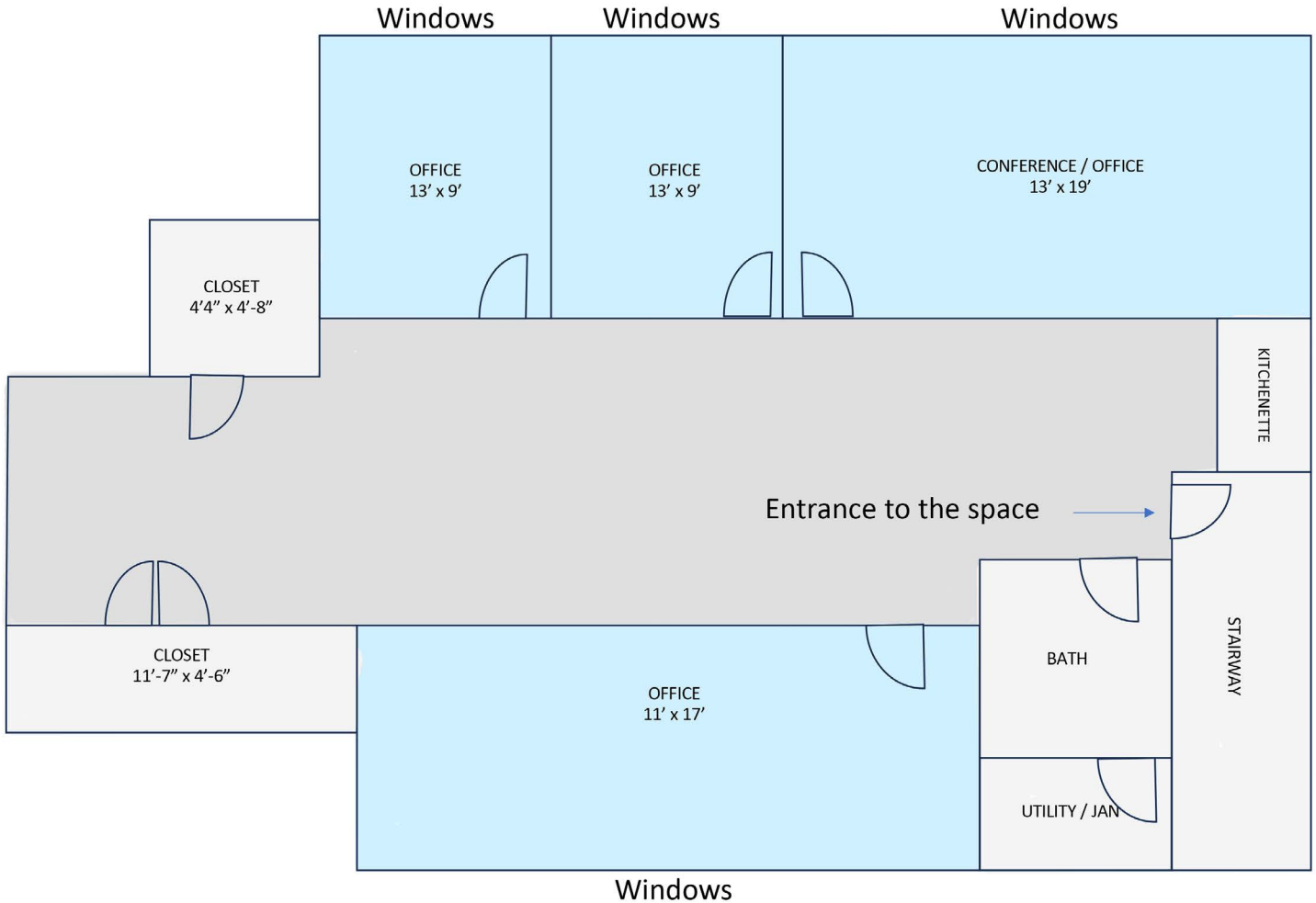


CUSHMAN &
WAKEFIELD



COMMERCIAL
ADVISORS

FLOOR PLAN - Suite 201



Caleb Park, SIOR
Associate Vice President
901 362 3454
cpark@commadv.com

5101 Wheelis Drive
Suite 300
Memphis, TN 38117
Main: 901 366 6070
www.commadv.com

Independently Owned and Operated / A Member of the Cushman & Wakefield Alliance

Cushman & Wakefield Copyright 11/05/24. No warranty or representation, express or implied, is made to the accuracy or completeness of the information contained herein, and same is submitted subject to errors, omissions, change of price, rental or other conditions, withdrawal without notice, and to any special listing conditions imposed by the property owner(s). As applicable, we make no representation as to the condition of the property (or properties) in question.