

TIMBER CREEK OFFICE PARK

WILLOW TREE CIR, CORDOVA, TN 38018

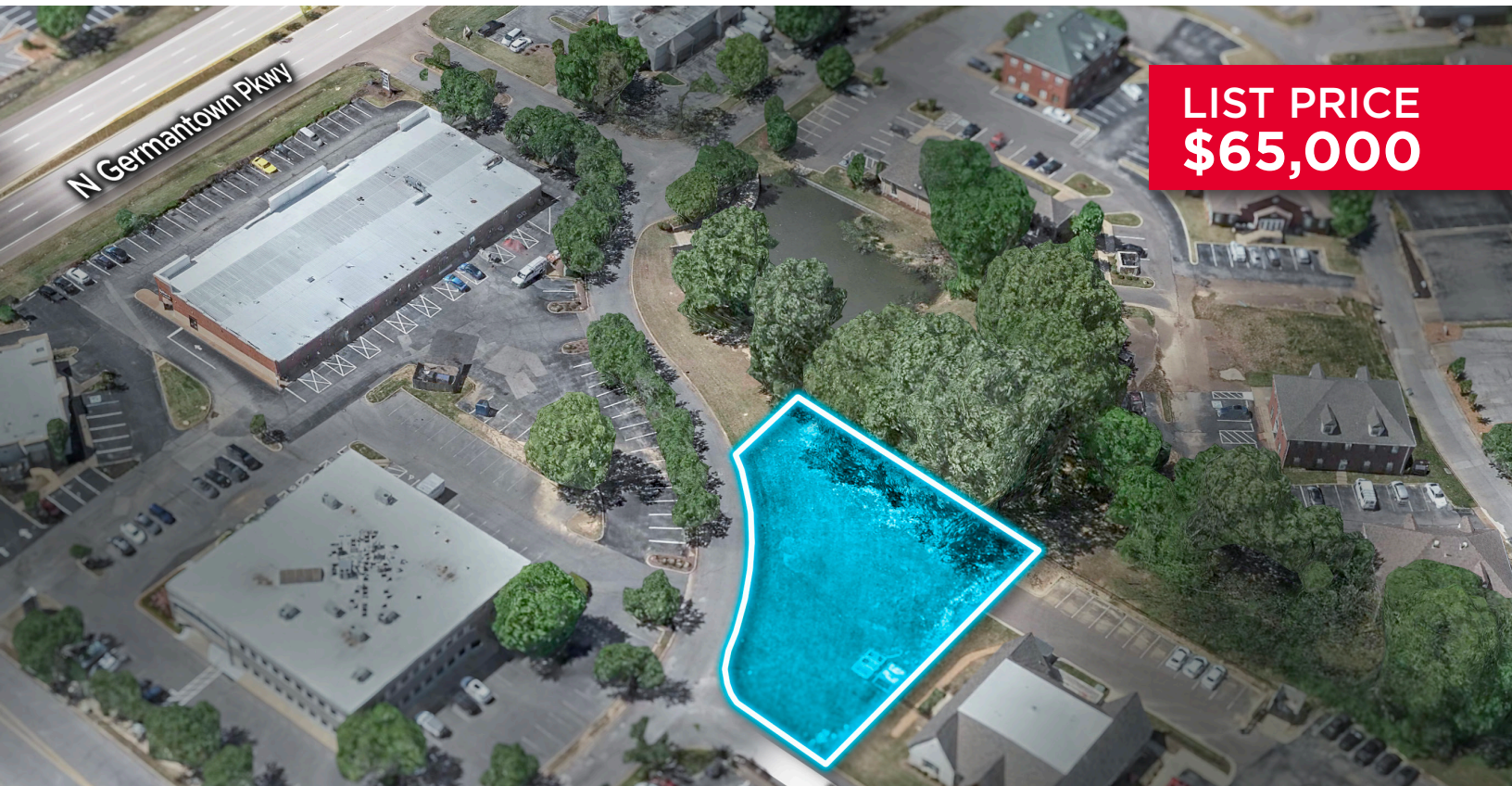


CUSHMAN &
WAKEFIELD



COMMERCIAL
ADVISORS

DEVELOPMENT READY SITE



**LIST PRICE
\$65,000**

LAST OPPORTUNITY TO BUILD +/- 0.48 ACRES AVAILABLE

PROPERTY HIGHLIGHTS

- This is the last opportunity to build in the Timber Creek Office Park
- +/-0.48 Acres
- Development Ready
- Adjacent to the Parks Beautiful Green space with Pond and Walking Path.
- Park consists of a mix of medical and general office
- Proximity to Germantown Parkway, Walnut Grove and Macon Rd.



Caleb Park, SIOR

Vice President

(901) 362-3454

cpark@commadv.com

5101 Wheelis Drive, Suite 300

Memphis, TN 38117

Main: 901 366 6070

www.commadv.com

Independently Owned and Operated / A Member of the Cushman & Wakefield Alliance

Cushman & Wakefield Copyright 2023. No warranty or representation, express or implied, is made to the accuracy or completeness of the information contained herein, and same is submitted subject to errors, omissions, change of price, rental or other conditions, withdrawal without notice, and to any special listing conditions imposed by the property owner(s). As applicable, we make no representation as to the condition of the property (or properties) in question.

TIMBER CREEK OFFICE PARK

WILLOW TREE CIR, CORDOVA, TN 38018



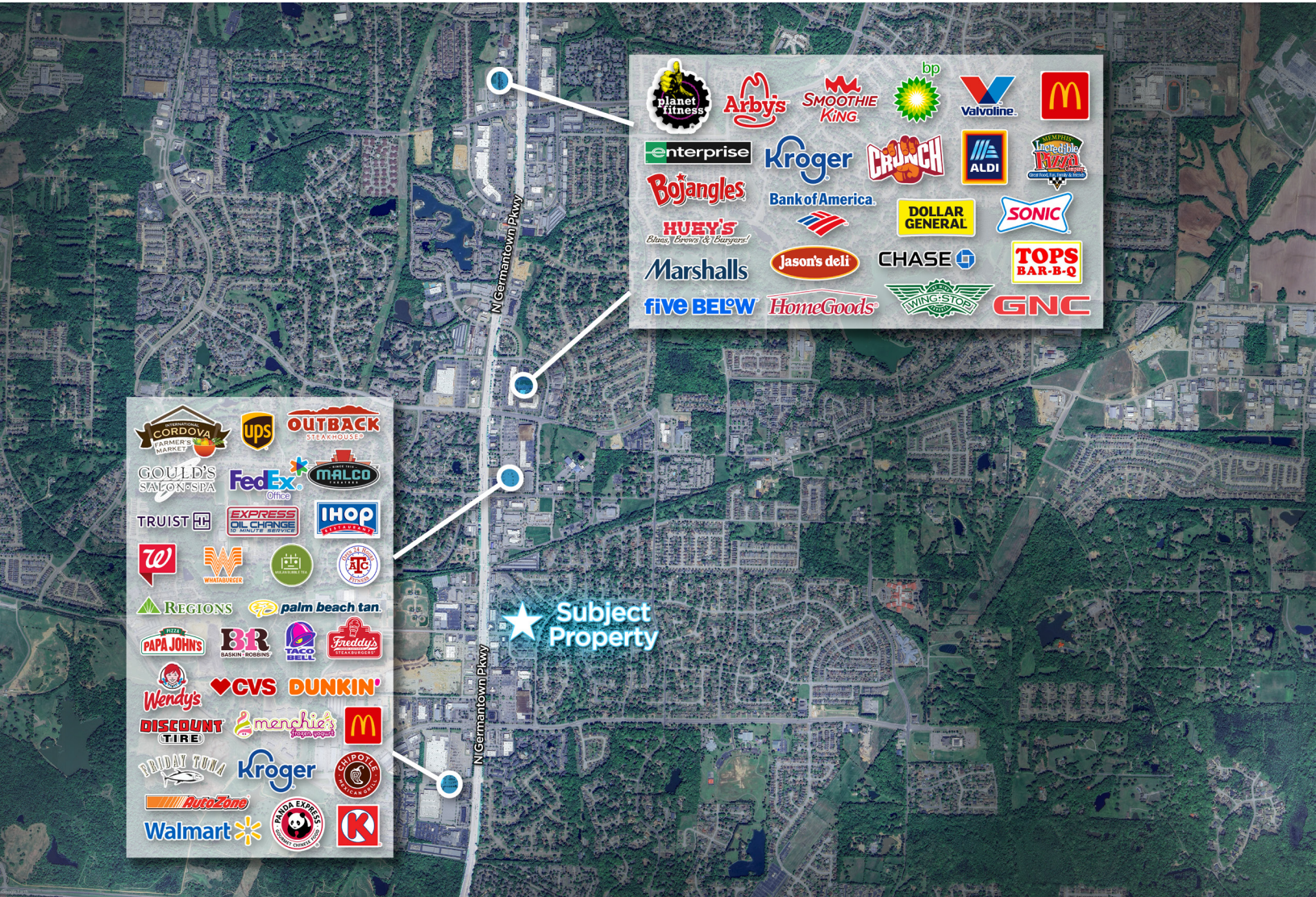
CUSHMAN &
WAKEFIELD



COMMERCIAL
ADVISORS

DEVELOPMENT READY SITE

NEIGHBORING AREA



Demographics	1 mile	5 mile
Total Businesses	495	4,011
Total Employees	5,496	50,039
Total Population	4,500	95,533
Median Household Income	\$79,840	\$87,114
Median Age	37.4	38.0

Independently Owned and Operated / A Member of the Cushman & Wakefield Alliance

Cushman & Wakefield Copyright 04/22/25. No warranty or representation, express or implied, is made to the accuracy or completeness of the information contained herein, and same is submitted subject to errors, omissions, change of price, rental or other conditions, withdrawal without notice, and to any special listing conditions imposed by the property owner(s). As applicable, we make no representation as to the condition of the property (or properties) in question.