

966 GOODMAN ROAD W

Horn Lake, MS 38637

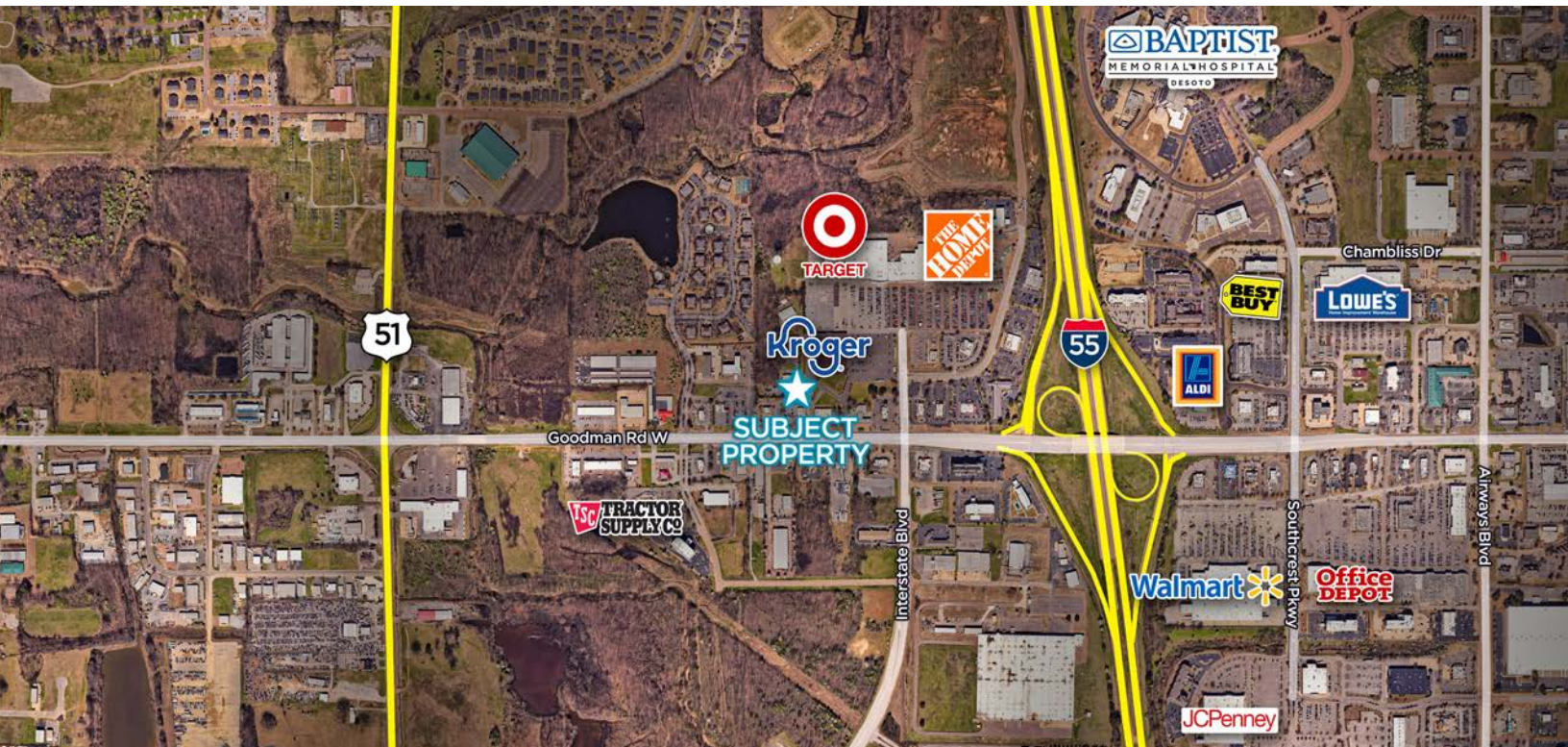
AUTO BODY SHOP FOR LEASE



CUSHMAN &
WAKEFIELD



COMMERCIAL
ADVISORS



FORMER AUTO BODY SHOP FOR LEASE

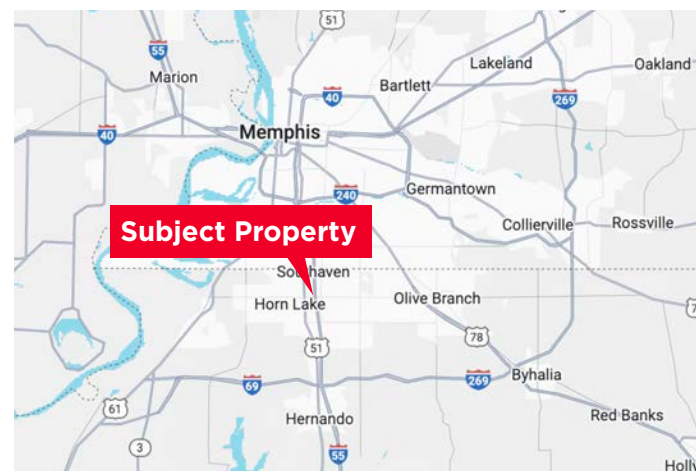
7,950 SF SHOP ON 1.78 ACRES

PROPERTY HIGHLIGHTS

- Building size: 7,950 SF
- 1.78 acres available for lease in Horn Lake, MS
- Zoned C-4 Planned Commercial
- Excellent Opportunity at the I-55/Goodman Rd Intersection in Desoto County MS

TRAFFIC COUNTS

- Goodman Rd - 38,000
- I-55 - 69,000



Carson Claybrook

Senior Vice President, Retail Broker Services
901 252 6483
cclaybrook@commadv.com

5101 Wheelis Drive, Suite 300
Memphis, TN 38117
Main: 901 366 6070
www.commadv.com

Independently Owned and Operated / A Member of the Cushman & Wakefield Alliance

Cushman & Wakefield Copyright 06/19/25. No warranty or representation, express or implied, is made to the accuracy or completeness of the information contained herein, and same is submitted subject to errors, omissions, change of price, rental or other conditions, withdrawal without notice, and to any special listing conditions imposed by the property owner(s). As applicable, we make no representation as to the condition of the property (or properties) in question.

966 GOODMAN ROAD W

Horn Lake, MS 38637

AUTO BODY SHOP FOR LEASE



CUSHMAN &
WAKEFIELD



COMMERCIAL
ADVISORS

SITE PLAN



Carson Claybrook

Senior Vice President, Retail Broker Services
901 252 6483
cclaybrook@commadv.com

5101 Wheelis Drive, Suite 300
Memphis, TN 38117
Main: 901 366 6070
www.commadv.com

Independently Owned and Operated / A Member of the Cushman & Wakefield Alliance

Cushman & Wakefield Copyright 06/19/25. No warranty or representation, express or implied, is made to the accuracy or completeness of the information contained herein, and same is submitted subject to errors, omissions, change of price, rental or other conditions, withdrawal without notice, and to any special listing conditions imposed by the property owner(s). As applicable, we make no representation as to the condition of the property (or properties) in question.