

1160 UNION AVE

Memphis, TN 38104

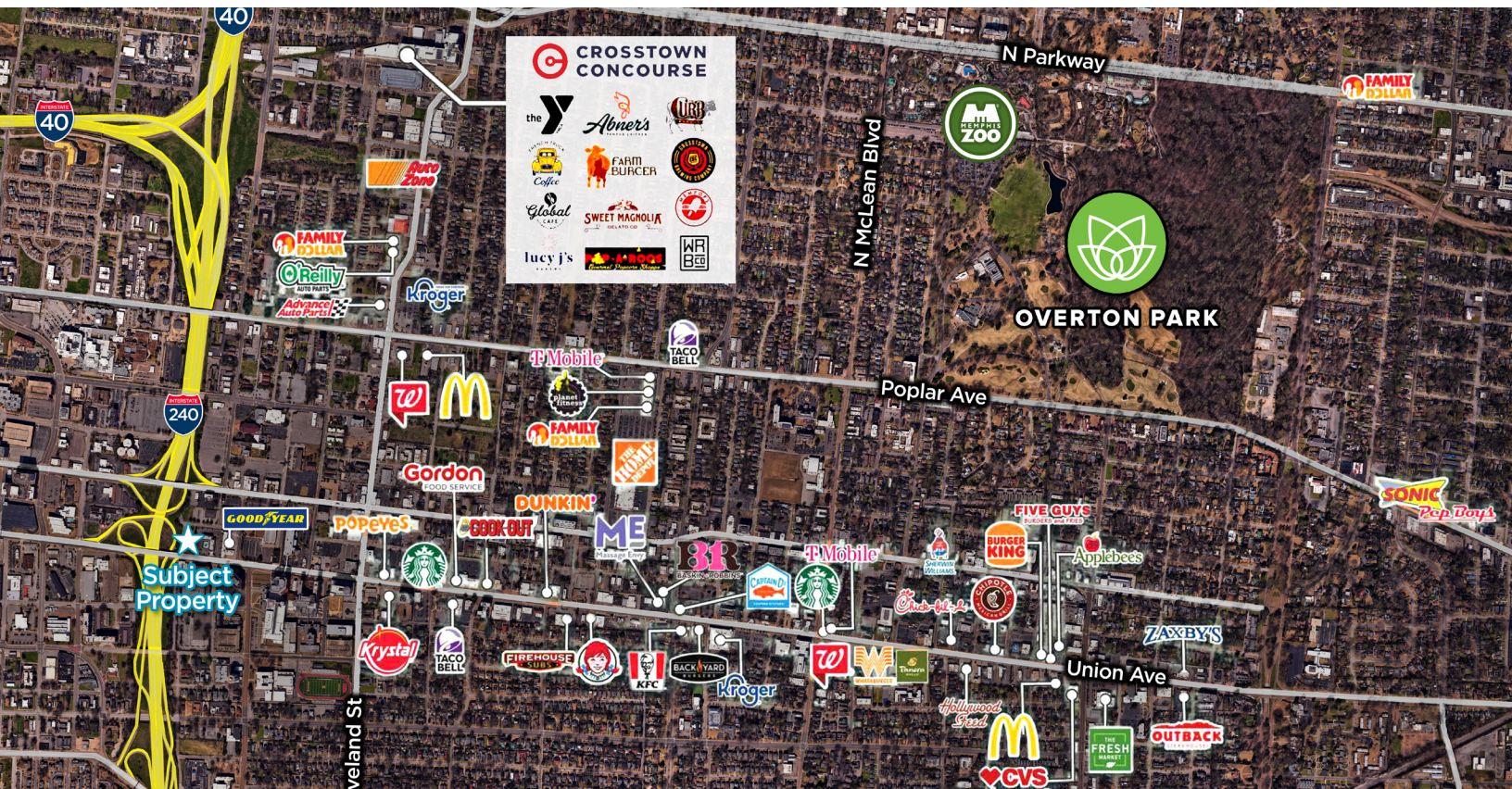
RETAIL SPACE FOR SALE



CUSHMAN &
WAKEFIELD



COMMERCIAL
ADVISORS

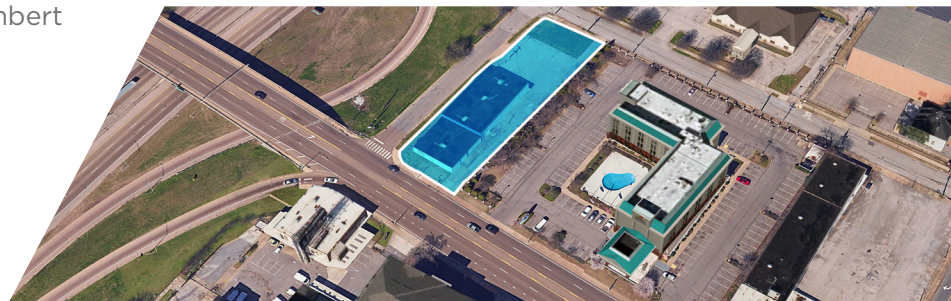
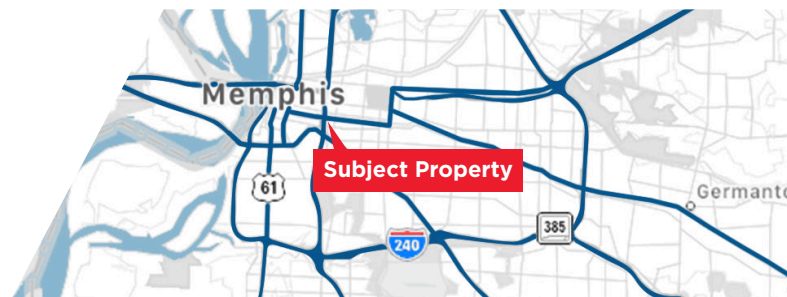


PROPERTY HIGHLIGHTS

- \$940,000
- 0.60 acres
- Zoned CMU-1
- 9,135 SF Building
- Within the Medical District Overlay
- Access to both Union Ave and South Rembert

TRAFFIC COUNTS

- Union Ave- 28,448 VPD



Carson Claybrook

Senior Vice President- Retail Brokerage Services
901 252 6483
cclaybrook@commadv.com

5101 Wheelis Drive, Suite 300
Memphis, TN 38117
Main: 901 366 6070
www.commadv.com

Independently Owned and Operated / A Member of the Cushman & Wakefield Alliance

Cushman & Wakefield Copyright 10/29/25. No warranty or representation, express or implied, is made to the accuracy or completeness of the information contained herein, and same is submitted subject to errors, omissions, change of price, rental or other conditions, withdrawal without notice, and to any special listing conditions imposed by the property owner(s). As applicable, we make no representation as to the condition of the property (or properties) in question.

1160 UNION AVE

Memphis, TN 38104

RETAIL SPACE FOR SALE

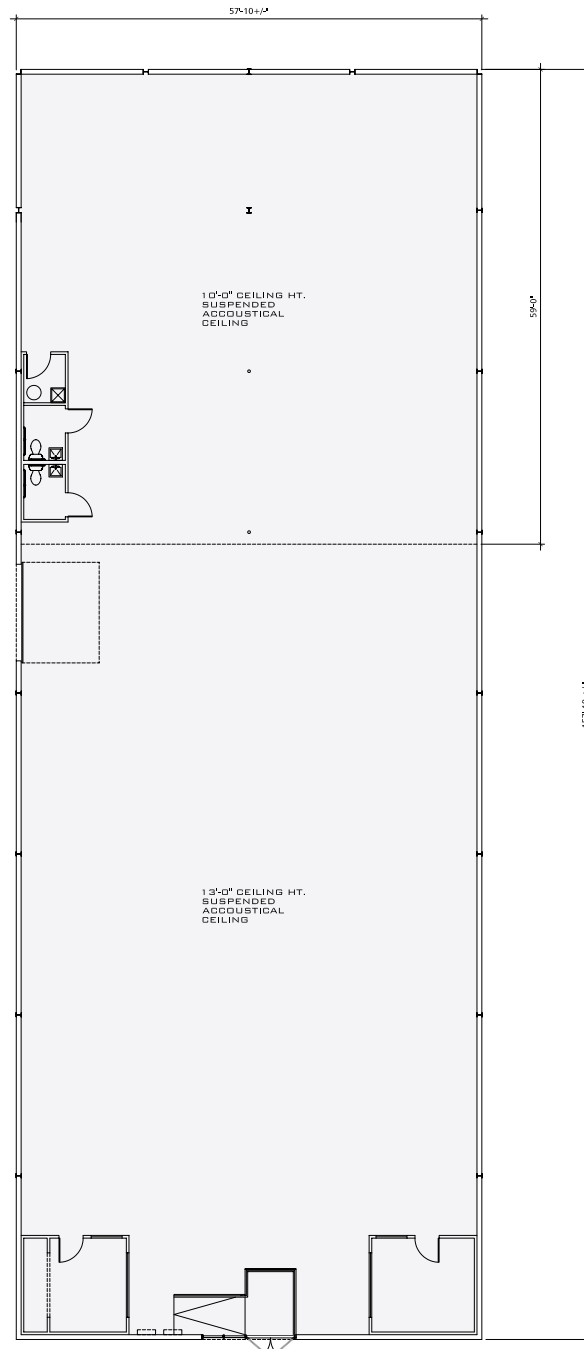


CUSHMAN &
WAKEFIELD



COMMERCIAL
ADVISORS

SITE PLAN



Carson Claybrook

Senior Vice President- Retail Brokerage Services
901 252 6483
cclaybrook@commadv.com

5101 Wheelis Drive, Suite 300
Memphis, TN 38117
Main: 901 366 6070
www.commadv.com

Independently Owned and Operated / A Member of the Cushman & Wakefield Alliance

Cushman & Wakefield Copyright 10/29/25. No warranty or representation, express or implied, is made to the accuracy or completeness of the information contained herein, and same is submitted subject to errors, omissions, change of price, rental or other conditions, withdrawal without notice, and to any special listing conditions imposed by the property owner(s). As applicable, we make no representation as to the condition of the property (or properties) in question.