

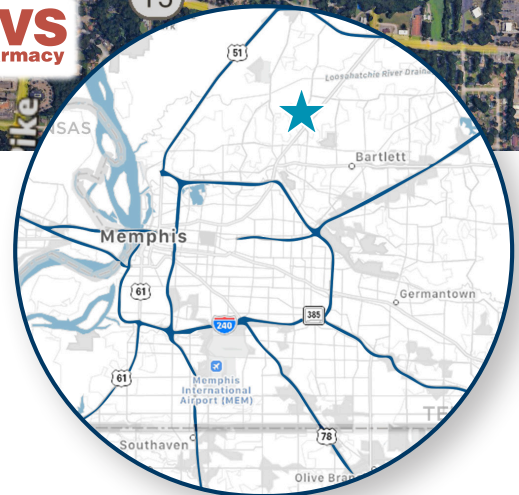


**3.26 ACRES**  
Land for Sale

**Property Highlights**

- Price: \$59,000
- Zoned R-10"
- Formerly approved PD for Self Storage
- Traffic Counts

AP HWY - 27,236



**Carson Claybrook**  
Vice President  
901 252 6483  
cclaybrook@commadv.com

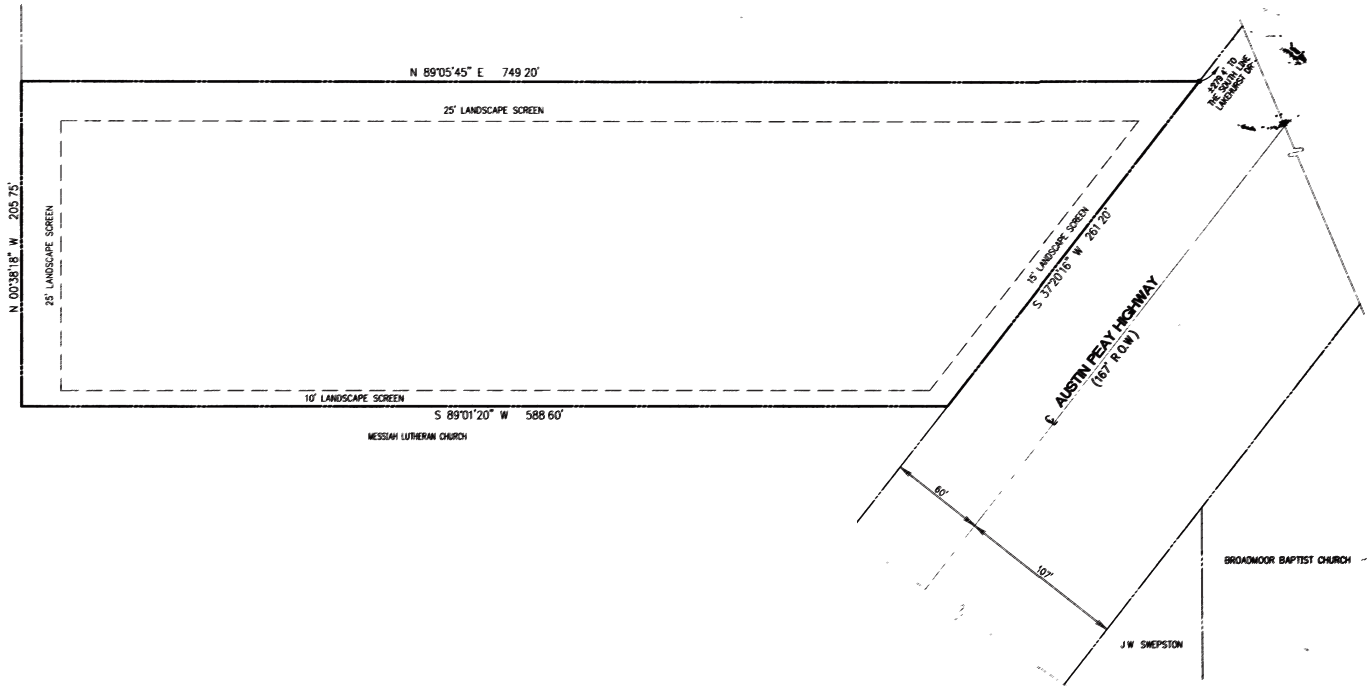
5101 Wheelis Drive, Suite 300  
Memphis, TN 38117  
Main: 901 366 6070  
[www.commadv.com](http://www.commadv.com)

*Independently Owned and Operated / A Member of the Cushman & Wakefield Alliance*

Cushman & Wakefield Copyright 12/13/24. No warranty or representation, express or implied, is made to the accuracy or completeness of the information contained herein, and same is submitted subject to errors, omissions, change of price, rental or other conditions, withdrawal without notice, and to any special listing conditions imposed by the property owner(s). As applicable, we make no representation as to the condition of the property (or properties) in question.



# SITE PLAN



## Demographics

	1 MI	3 MI	5 MI
Population	6,710	61,549	145,479
Households	2,586	22,980	53,840

	1 MI	3 MI	5 MI
Average Income	\$70,089	\$72,818	\$72,485
Median Age	40	35	35

**Carson Claybrook**  
Vice President  
901 252 6483  
cclaybrook@commadv.com

5101 Wheelis Drive, Suite 300  
Memphis, TN 38117  
Main: 901 366 6070  
[www.commadv.com](http://www.commadv.com)

*Independently Owned and Operated / A Member of the Cushman & Wakefield Alliance*

Cushman & Wakefield Copyright 12/13/24. No warranty or representation, express or implied, is made to the accuracy or completeness of the information contained herein, and same is submitted subject to errors, omissions, change of price, rental or other conditions, withdrawal without notice, and to any special listing conditions imposed by the property owner(s). As applicable, we make no representation as to the condition of the property (or properties) in question.